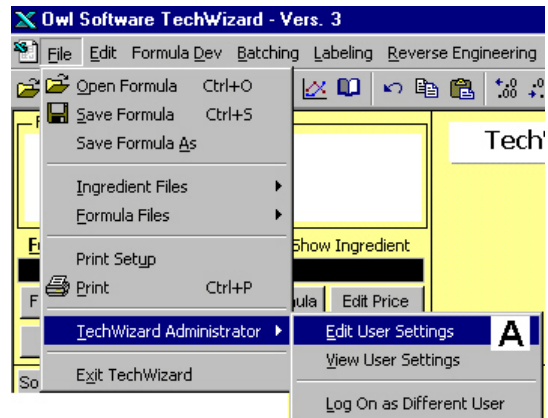




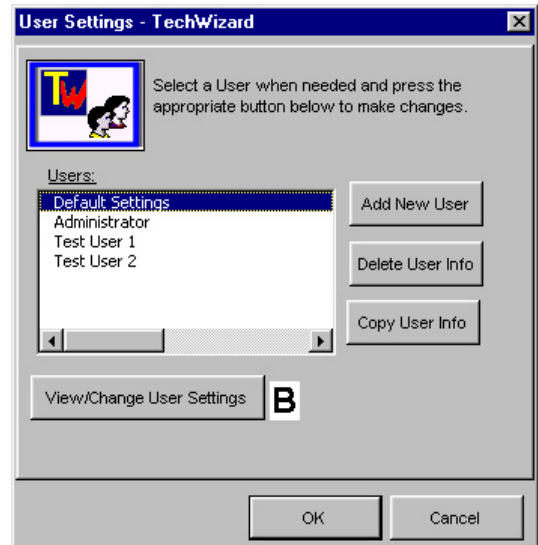
Accessing TechWizard™ Version 2 Ingredient and Formula Files While Using Version 3 © 2002 Owl Software All rights reserved

The following is described in more detail in the file **Manual.pdf** (page 106 to 111) found on the TechWizard™ Version 3 CD.

1. To edit user settings, select **Edit User Settings (A)** from the **TechWizard Administrator** menu.

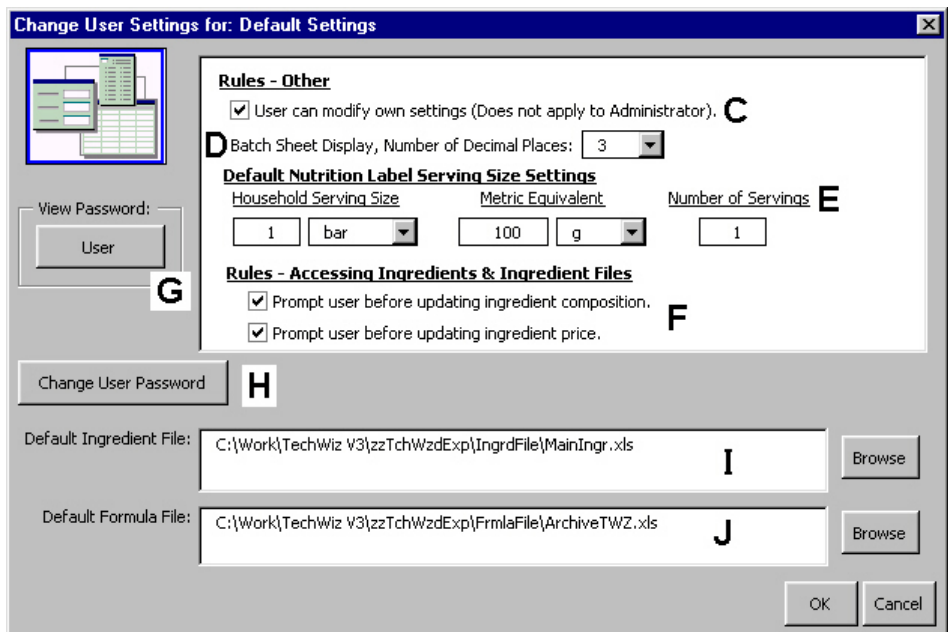


2. The **User Settings** window appears. Select **Administrator** as the user. Press the **View/Change User Settings (B)** button.



Continued on Back >

3. The **Change User Settings** window appears.
4. Press the **Browse** button for the default ingredient file (**I**). Find and select **Mainingr.ing**. It will typically be located in the following location, **C:\Program Files\TchWzdVer2\Mainingr.ing**.
5. Press the **Browse** button for the default formula file (**J**). Find and select **ArchiveTWZ.ach**. It will typically be located in the following location, **C:\Program Files\TchWzdVer2\ArchiveTWZ.ach**.



6. Press the **OK** button on each of the windows.
7. Select **Log On as Different User (K)** from the **TechWizard Administrator** menu.
8. Select **Administrator (L)** and press the **OK** button (**M**).

