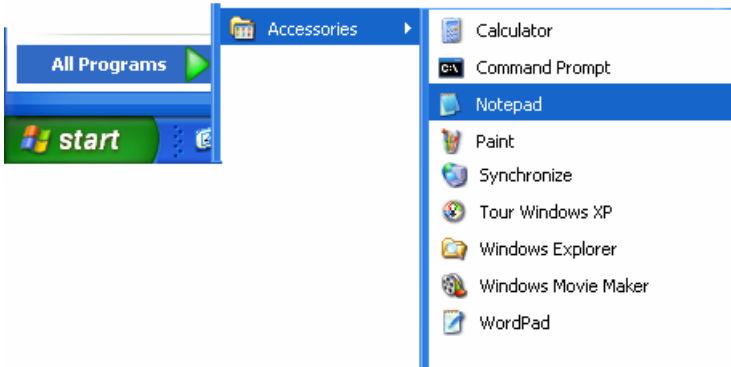


## Opening TechWizard™, Production Wizard™, and other Excel files at the Same Time

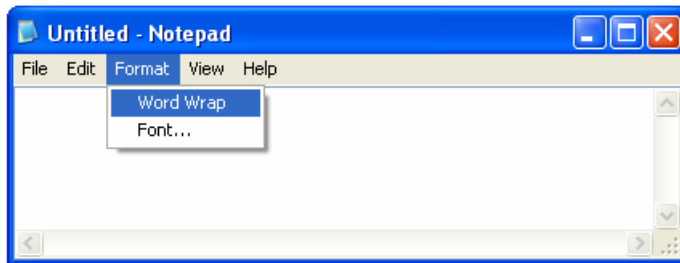
Many times users have other Excel files open when they wish to use TechWizard™ or Production Wizard™. Using a batch file (.bat) will insure that a new copy of Excel is started each time you open TechWizard™ and/or Production Wizard™. You will be able to go back and forth between the various copies without difficulty.

### Creating a Batch File:

1. Start a text editor like MS Notepad.

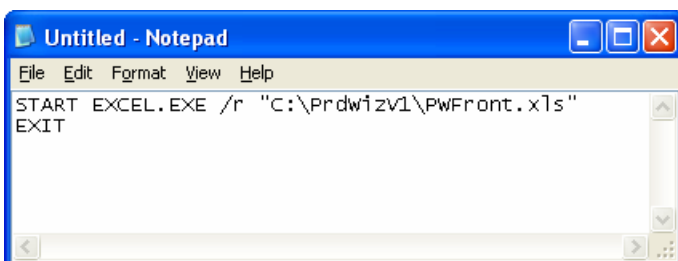


2. If using Notepad, make sure the **Word Wrap** option is unchecked under the **Format** menu.



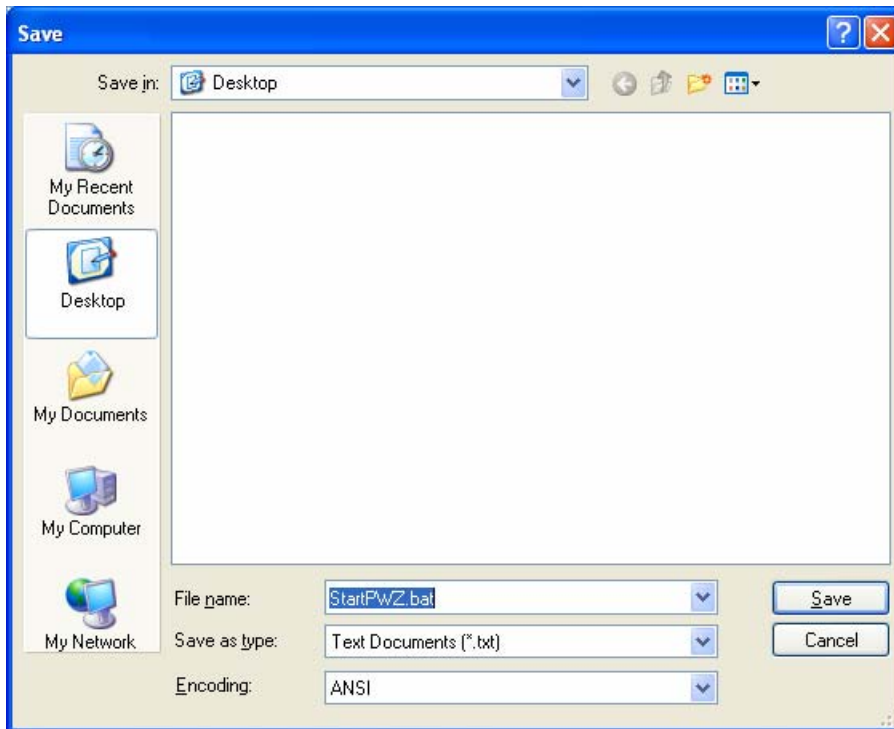
3. Insert the following code in the empty Notepad document.

```
START EXCEL.EXE /r "C:\PrdWizV1\PWFront.xls"  
EXIT
```



4. Replace C:\PrdWizV1\PWFront.xls with the location of your TechWizard™ (Front.xls) or Production Wizard™ (PWFront.xls) file.

5. Save the file with the .bat ending instead of .txt.



6. If the batch file is not saved to your desktop, create a shortcut to point to the .bat file.