

This document covers installing and registering TechWizard™. Please note that TechWizard™ is registered after installing the program. You must contact Owl Software to receive a registration code.

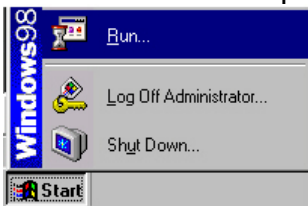
System Requirements:

A computer running Microsoft® Windows 2000 or higher. Microsoft® Excel version 9 (Excel 2000) or higher is also required.

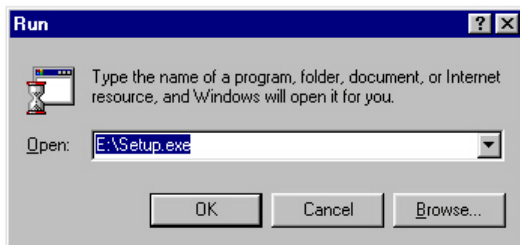
Installing TechWizard™

Note: If the program is already installed from an internet download you can go to the next section, Registering and Starting TechWizard™.

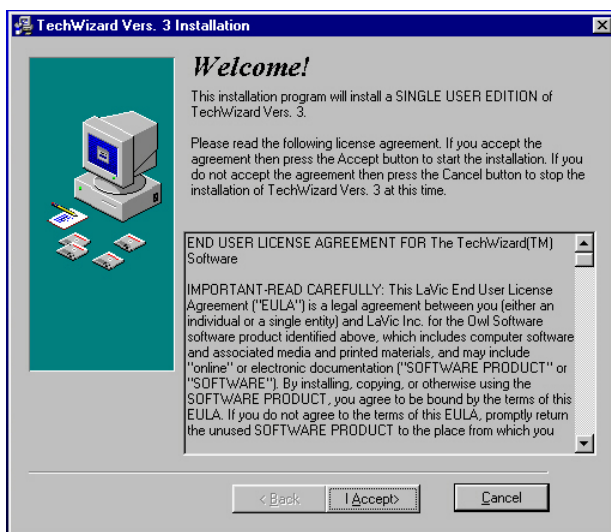
1. Select **Run** after pressing the **Start** Button.



2. Type D:\setup.exe in the Run window and press the **OK** button. Note: D:\ represents your CD-ROM drive or file download location. You can also browse to the file location and double click to start.



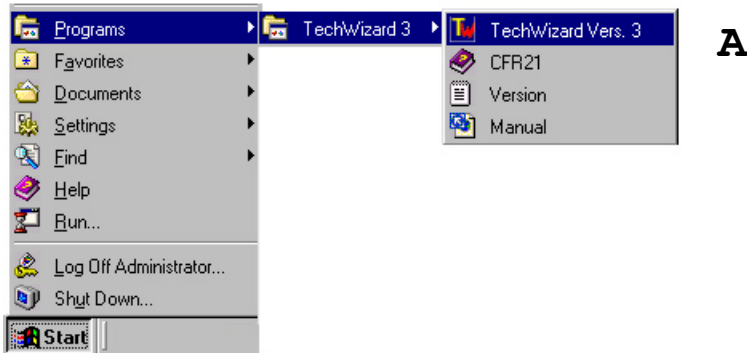
3. When the Installation window appears read the agreement, if you agree with the terms of use, press the **I Accept** button.



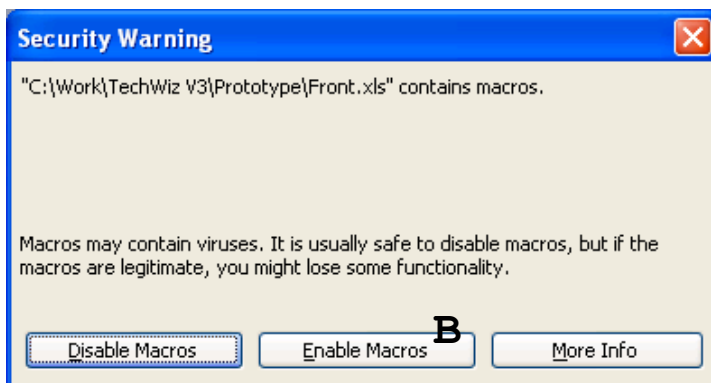
NOTICE: PLEASE CONTACT OWL SOFTWARE TO RECEIVE A REGISTRATION CODE. THIS CODE WILL ALLOW YOU TO USE TECHWIZARD™.

Registering and Starting TechWizard™

1. Click the **Start** button.
2. Press **TechWizard Vers. 3 (A)**. If no shortcut is available, you can browse to the TechWizard™ subdirectory and start the file front.xls.



3. Select **Enable Macros** if the following message appears.



NOTE: If a Microsoft® Excel message box appears regarding macros in the workbook, press the **Enable Macros** button (**B**). If you disable macros the TechWizard™ program will not work. If you are not prompted to enable macros instructions on how to make the **Enable Macros** window appear will be displayed in TechWizard™.

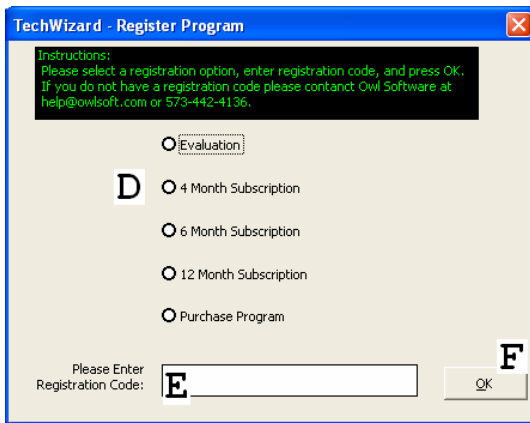
Note: Your system administrator can use the selfcert.exe option in Microsoft Office to attach a certificate to the TechWizard™ file, front.xls. Once this is done the Security Warning window will not appear. Contact Owl Software for more information on how to do this.

Once you have a registration code, please follow the steps described on the next page. If you have any trouble please contact us. Once the program is registered, we would be happy to explain some of the main features of the program.

4. Register TechWizard™.



Press the **Register** button (C).



The **Register Program** window appears. Select the appropriate registration option (D). For example, if you are evaluating the program select **Evaluation**. Enter the registration code (E) provided by Owl Software and click the OK button (F). If you do not have a registration code, contact Owl Software.

5. Start TechWizard™



To start using TechWizard™, press the **Enter Program** button (G).

When the **Select User** window appears, press the **OK** button (H).

