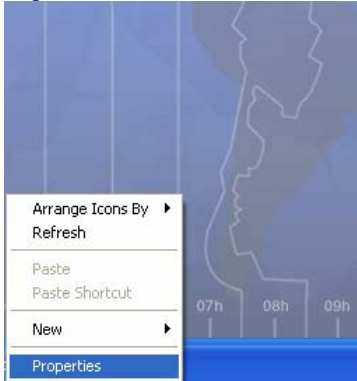


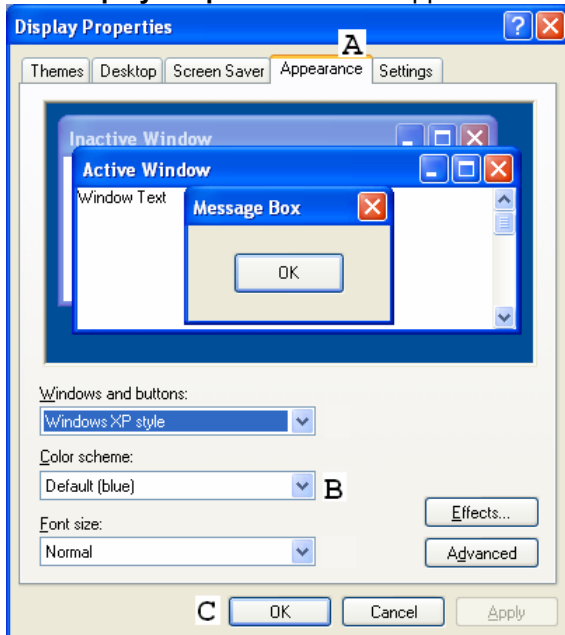
Portions of the Screen or a Window are Blacked Out in TechWizard™

This problem occurs in Microsoft® Excel when a user has non-standard window settings. To fix the problem, do the following:

1. Right click the **Windows** desktop. Click the **Properties** menu.



2. The **Display Properties** window appears.



3. Click the **Appearance Tab (A)**.
4. Set the **Color scheme to Default (blue) (B)**.
5. Press the **OK button (C)**.
6. The problem should now be corrected.