

## Starting TechWizard™ Version 3 Using Microsoft Vista™ and Excel® 2007

Many things have changed with the introduction of Excel® 2007. The *Security Settings* section describes how to set up Excel to allow TechWizard™ Version 3 to run. The *Starting and Accessing TechWizard™ Version 3 Menus* section explains how to start TechWizard™ and use the built-in menus.

**Notice: When installing TechWizard™ make sure you do not install the program under the \Program Files\ folder. If you are upgrading a computer that already has TechWizard™ loaded please contact technical support.**

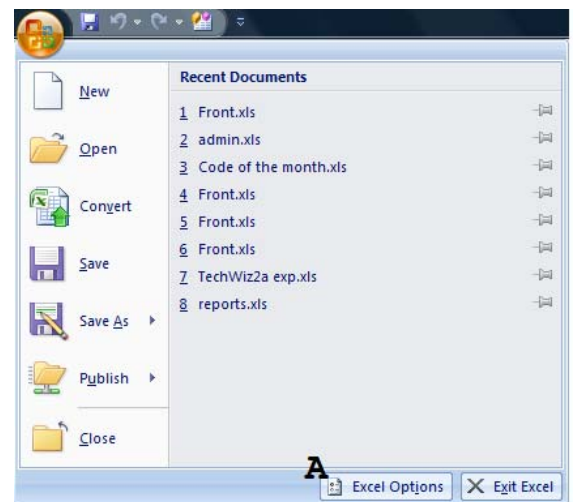
### SECURITY SETTINGS

For TechWizard™ to have access to its programming code, Excel macro security must allow the user to enable macros or the user must set the TechWizard™ subdirectory as a trusted location. This document discusses both methods. To add TechWizard™ to Excel Trusted Locations go to Section A or to allow the user to enable macros in Excel go to Section B.

#### Section A: Security Settings – Adding TechWizard™ to Trusted Locations

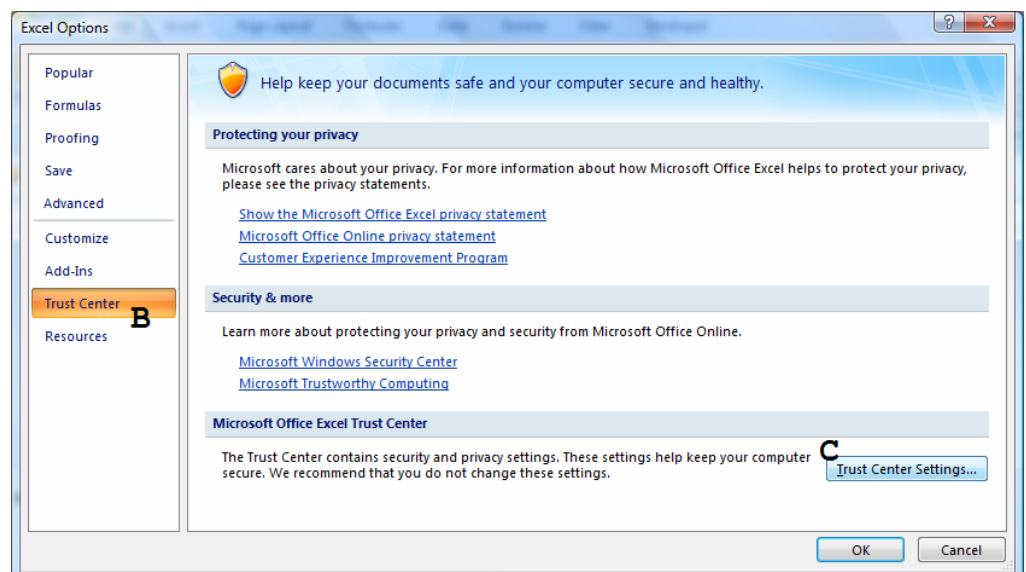
To add the TechWizard™ folder to Trusted Locations in Excel do the following:

1. Start Excel 2007. TechWizard™ should not be open.
2. Click the **Microsoft Office Button**  , and then click the **Excel Options** button (A).



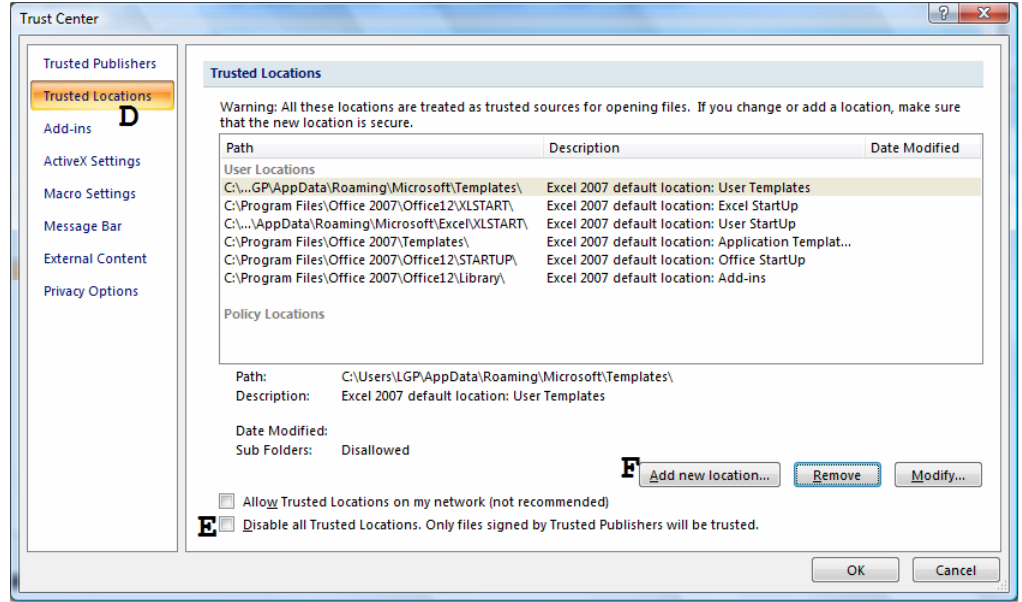
The Excel Options Window appears.

3. Click **Trust Center** on the left (B) then press the **Trust Center Settings** button (C).



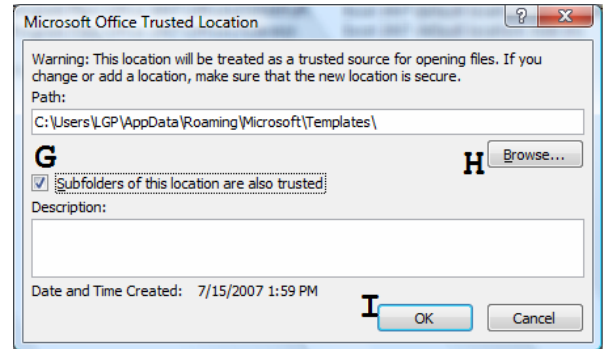
The Trust Center window appears.

4. Click **Trusted Locations** on the left (D). Make sure **Disable all Trusted Locations** is not checked (E). Press the **Add new location** button (F).



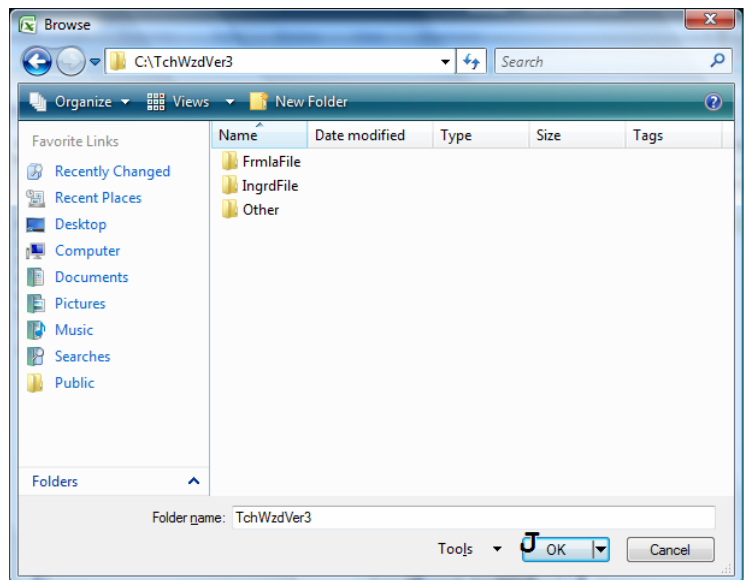
The Microsoft Office Trusted Location window appears.

5. Make sure **Subfolders of this location are also trusted** is checked (G). Click the **Browse** button (H) and locate the folder \TchWzdVer3\ (most likely it will be at C:\TchWzdVer3). Press the **OK** button in the **Browse** window (J). Press the **OK** button in the Microsoft Office Trusted Location window (I).




6. Click the **OK** button as needed to close the various windows.
7. Exit Excel 2007.

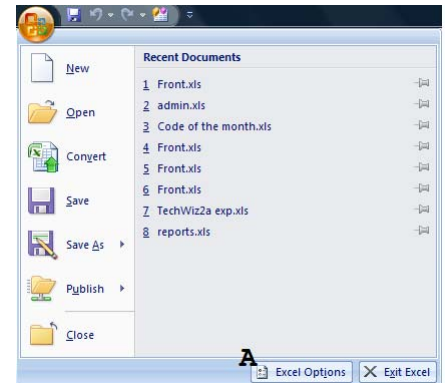
8. You are ready to start TechWizard™. Please refer to *Starting TechWizard™ with Excel Security Settings Configured for a Trusted Location*.



## Section B: Security Settings – Allowing the User to Enable Macros

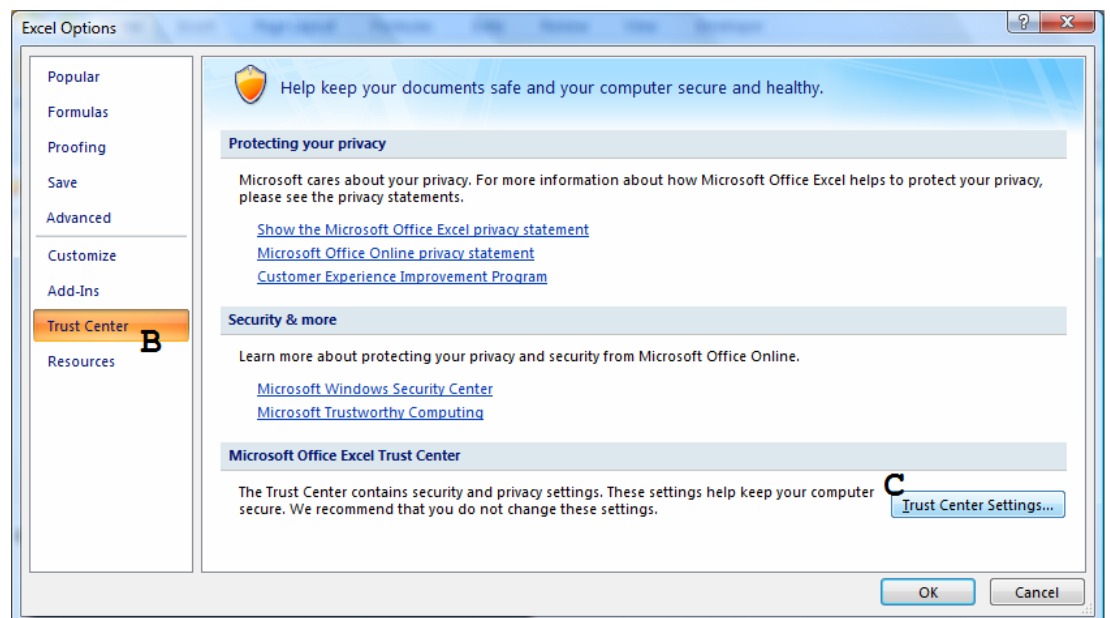
To set Excel security settings to allow the user to enable macros when starting TechWizard™ do the following:

1. Start Excel 2007. TechWizard™ should not be open.
2. Click the **Microsoft Office Button**  , and then click the **Excel Options** button (A).



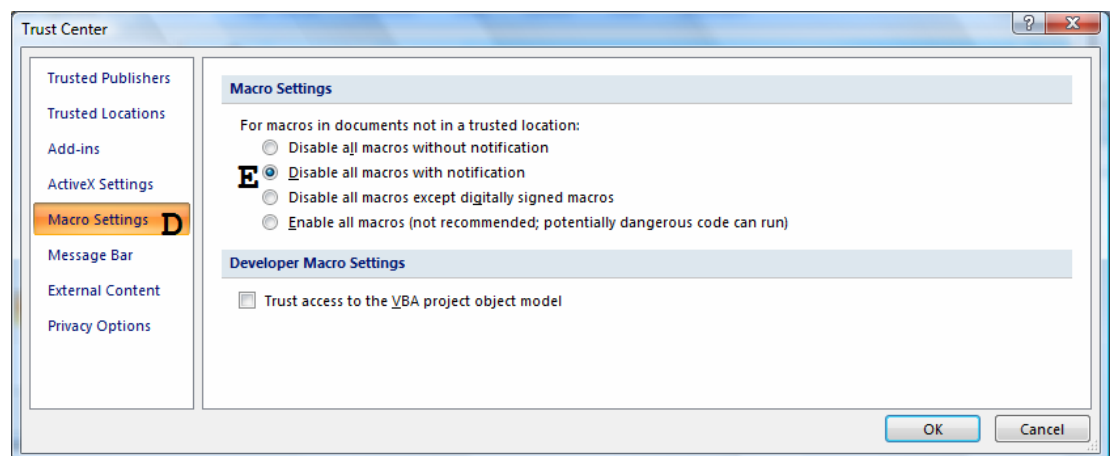
The Excel Options Window appears.

3. Click **Trust Center** on the left (B) then press the **Trust Center Settings** button (C).



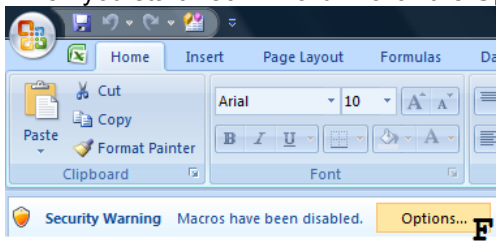
The Trust Center window appears.

4. Click **Macro Settings** on the left (D).
5. Select the option **Disable all macros with notification** (E).
6. Press the **OK** button as needed to close the various windows.
7. Exit Excel 2007.



8. You are ready to start TechWizard™. Please refer to *Starting TechWizard™ with Excel Security Settings Configured to Enable Macros*.

9. When you start TechWizard™ click the **Options** button (F).



The Microsoft Office Security Options window appears.

10. Select the **Enable this content** option (G) and press the **OK** button. You are ready to enter TechWizard™.

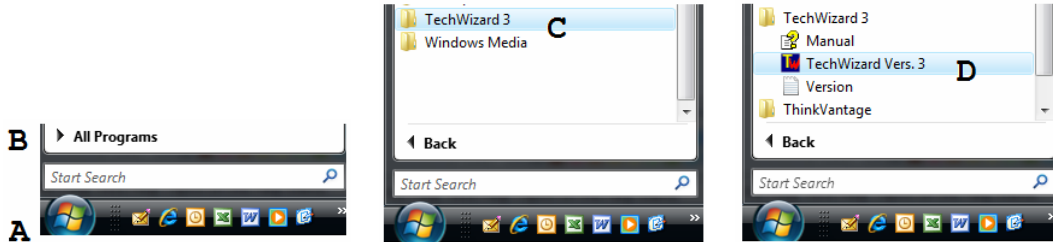


## STARTING AND ACCESSING TECHWIZARD™ VERSION 3 MENUS

### **A. Starting TechWizard™ with Excel Security Settings Configured for Trusted Location**

To use TechWizard™ you must make sure the Excel® security settings are properly set (see Security Settings).

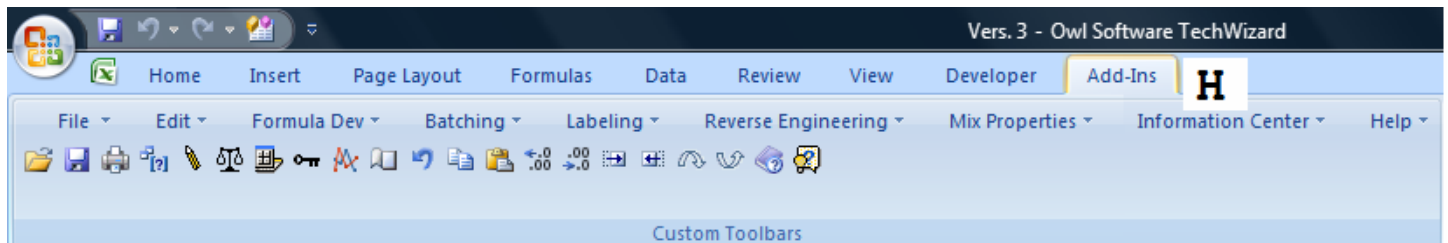
1. To start TechWizard™ click the **Start** button (A), select **All Programs** (B), scroll until you see the TechWizard3 folder and click it (C). Click the TechWizard™ shortcut (D).



2. The TechWizard™ start up window appears in Excel. Before you can enter the program, it must be registered. If you have not done so, press the **Register** button (E), select the correct registration option, enter the registration code, and press **OK**.
3. Press the **Enter Program** button (F) in the TechWizard™ start up window. The Select User window appears.



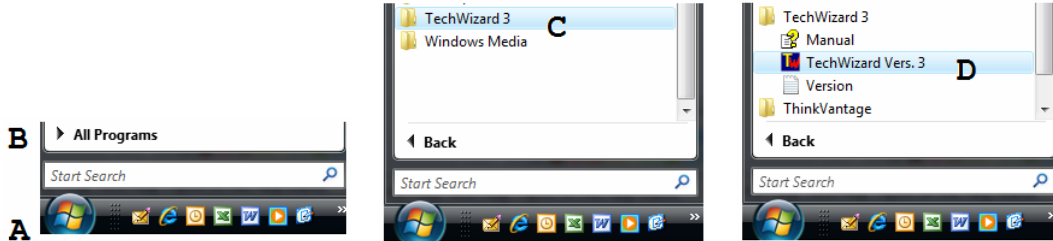
4. Select a user and press the **OK** button (G). The TechWizard™ Formula Development section appears.
5. Select the Add-Ins tab (H) to access the TechWizard™ menus. Be sure to use only the menus inside the Add-Ins tab and buttons provided on the various sheets otherwise unexpected errors may occur.



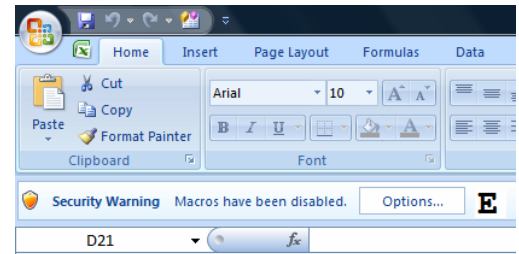
## B. Starting TechWizard™ with Excel Security Settings Configured to Enable Macros

To use TechWizard™ you must make sure the Excel® security settings are properly set (see Security Settings).

- To start TechWizard™ click the **Start** button (A), select **All Programs** (B), scroll until you see the TechWizard3 folder and click it (C). Click the TechWizard™ shortcut (D).

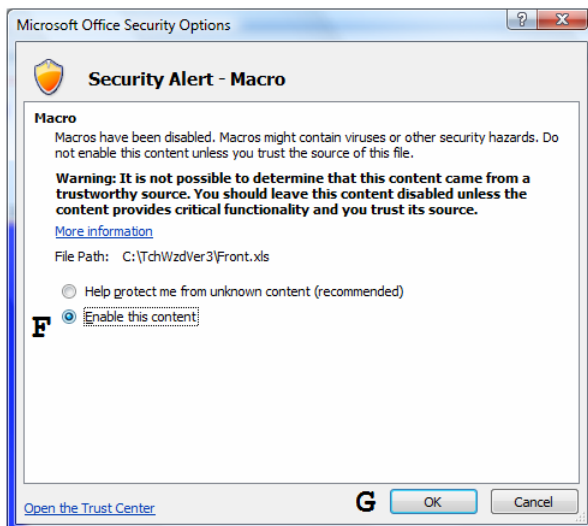


- The TechWizard™ start up window appears in Excel along with a security warning. Click on the **Options** button (E).



The Microsoft Security Options window appears.

- Select the **Enable this content** option (F) and Click **OK** (G).



- For the rest of the instructions please refer to step 2 in *Starting TechWizard™ with Excel Security Settings Configured for Trusted Location*.