



Getting TechWizard™ Version 4 Started Using Excel 2007 or 2010

This document covers installing, registering, and starting TechWizard™ in Excel 2007 or 2010. Please note that TechWizard™ is registered **after** installing the program. You must contact Owl Software to receive a registration code.

System Requirements:

A computer running Microsoft® Windows and Microsoft® Excel 2003 or higher is required.

Installing TechWizard™

Note: If the program is already installed from an Internet download you can go to the next section, Security Settings.

1. You must agree to the End User License Agreement to install TechWizard™.
2. Installing TechWizard™.
 - a. If you have downloaded TechWizard™ install file, please follow the instructions provided on the web page to install it.
 - b. If you are installing from a USB drive, please find the Setup.exe file on the USB Drive and double-click it to start the installation. Follow the instructions provided in the install window.

Notice: When installing TechWizard™ make sure you do not install the program under the \Program Files\ folder.

The *Security Settings* section describes how to set up Excel to allow TechWizard™ Version 4 to load all necessary files. The *Starting TechWizard™ Version 4* section explains how to start TechWizard™ after the security settings have been configured.

Security Settings

For TechWizard™ to have access to its programming code, Excel macro security must allow the user to enable macros or the user must set the TechWizard™ subdirectory as a trusted location. This document discusses both methods. To add TechWizard™ to Excel Trusted Locations go to Section A (below) or to allow the user to enable macros in Excel go to Section B on page 3.

Section A: Security Settings – Adding TechWizard™ to Trusted Locations

To add the TechWizard™ folder to Trusted Locations in Excel do the following:

In Excel 2007

1. Start Excel 2007. **TechWizard™ should not be open.**
2. Click the **Office button** and then click **Excel Options**.

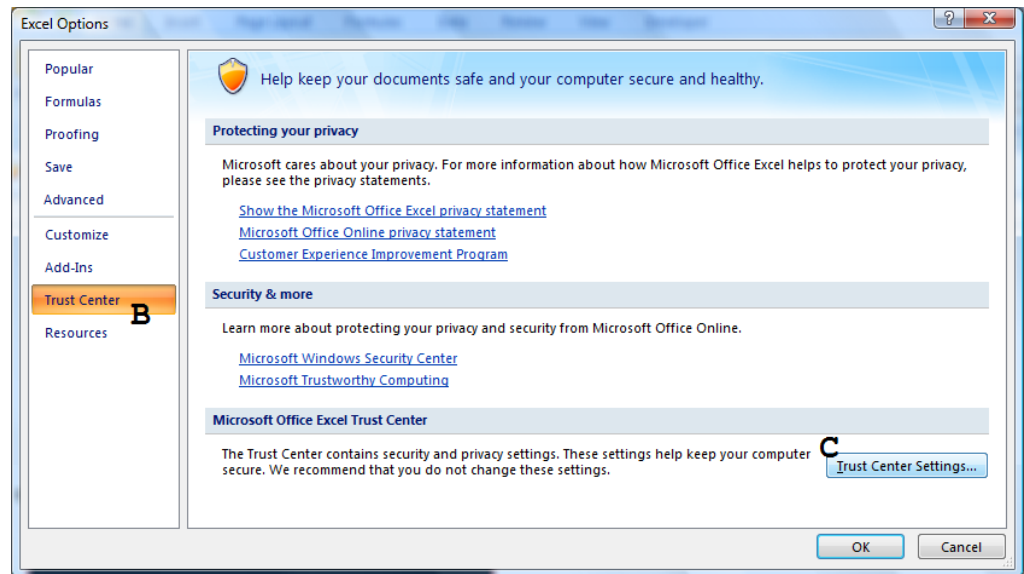
In Excel 2010

1. Start Excel 2010. **TechWizard™ should not be open.**
2. Click the **File tab** and then click the **Options**.

The rest of the instructions in this section are the same for either Excel 2007 or Excel 2010.

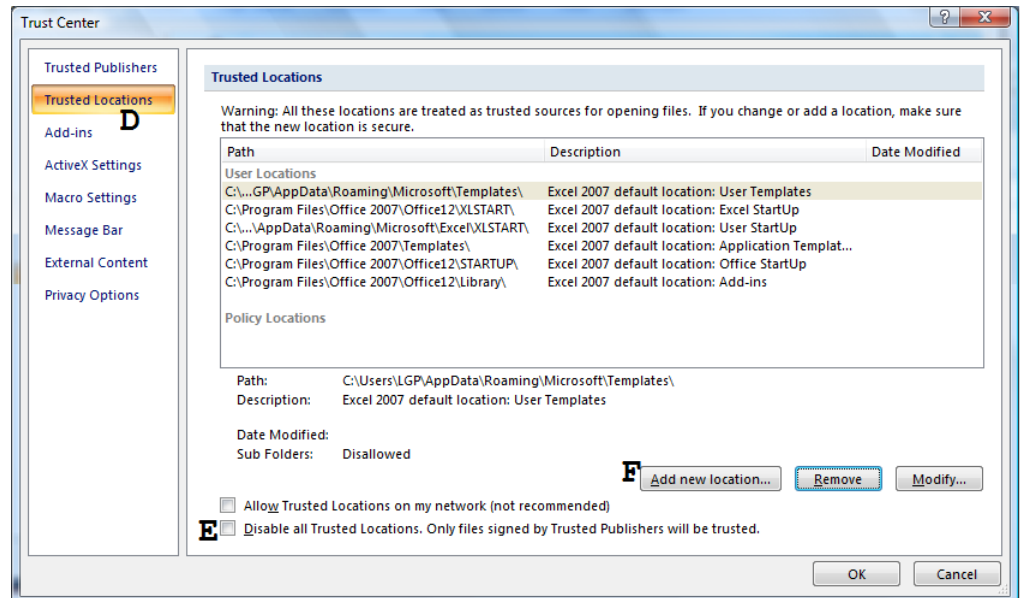
The Excel Options Window appears.

3. Click **Trust Center** on the left (**B**) then press the **Trust Center Settings** button (**C**).



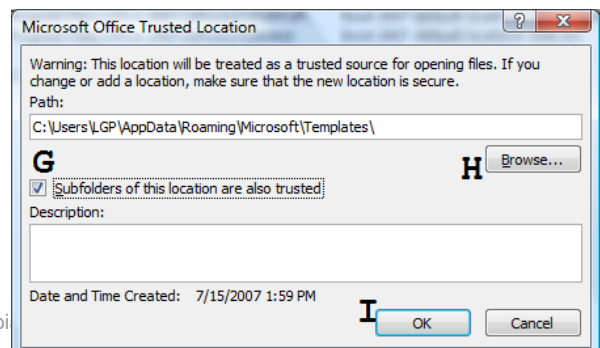
The Trust Center window appears.

4. Click **Trusted Locations** on the left (**D**). Make sure **Disable all Trusted Locations** is not checked (**E**). Press the **Add new location** button (**F**).

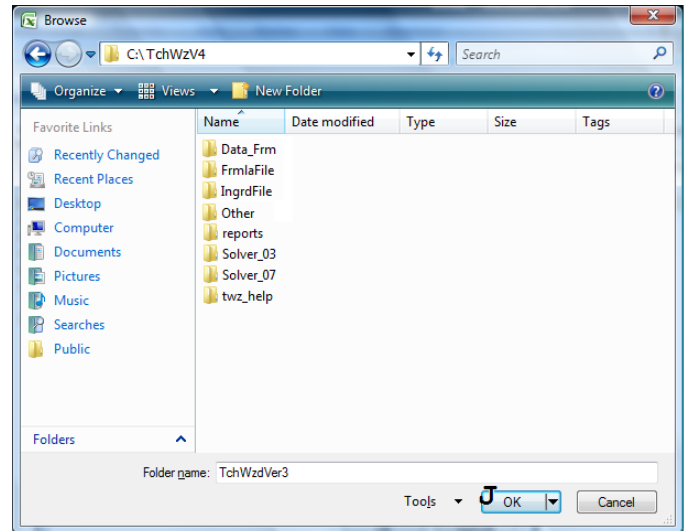


The Microsoft Office Trusted Location window appears.

5. Make sure **Subfolders of this location are also trusted** is checked (**G**). Click the **Browse** button (**H**). The Browse window appears. Locate the folder \TchWzV4\ (most likely it will be at C:\TchWzV4). Press the **OK** button in the **Browse** window (**J in figure below**). Press the **OK** button in the Microsoft Office Trusted Location window (**I**).



6. Click the **OK** button as needed to close the various windows.
7. Exit Excel.
8. You are ready to start TechWizard™. Please refer to *Starting TechWizard™ with Excel Security Settings Configured for a Trusted Location* on page 5.



Section B: Security Settings – Allowing the User to Enable Macros

If you just completed the instructions in, *Section A: Security Settings – Adding TechWizard™ to Trusted Locations* then you can skip this section. To set Excel security settings to allow the user to enable macros when starting TechWizard™ do the following:

In Excel 2007

1. Start Excel 2007. **TechWizard™ should not be open.**
2. Click the **Office** button and then click **Excel Options**.

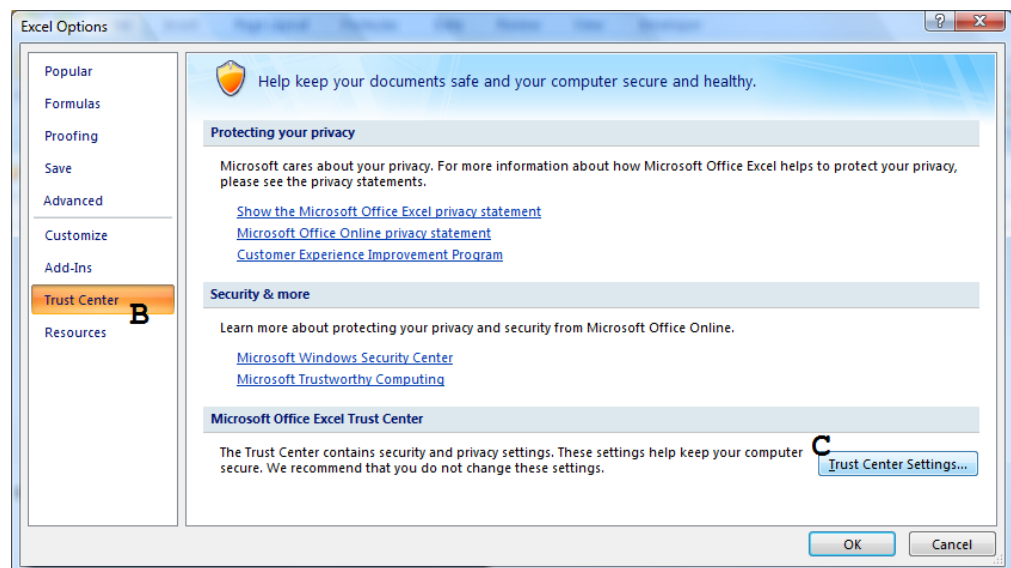
In Excel 2010

1. Start Excel 2010. **TechWizard™ should not be open.**
2. Click the **File** tab and then click **Options**.

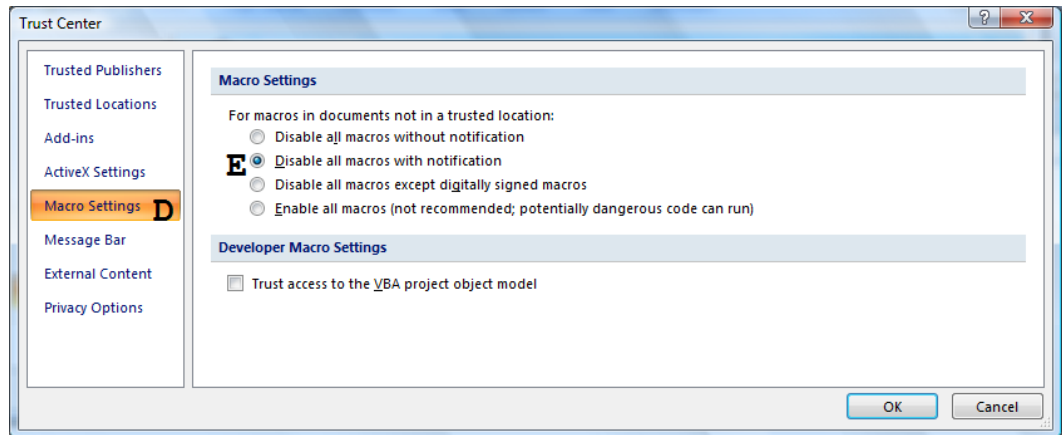
The rest of the instructions in this section are the same for either Excel 2007 or Excel 2010.

The Excel Options Window appears.

3. Click **Trust Center** on the left (**B**) then press the **Trust Center Settings** button (**C**).



The Trust Center window appears.



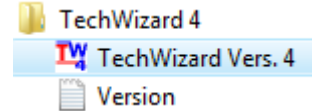
4. Click **Macro Settings** on the left (**D**).
5. Select the option **Disable all macros with notification** (**E**).
6. Press the **OK** button as needed to close the various windows.
7. Exit Excel.
8. You are ready to start TechWizard™. Please refer to *Starting TechWizard™ with Excel Security Settings Configured to Enable Macros* on page 6.

Starting TechWizard™ Version 4

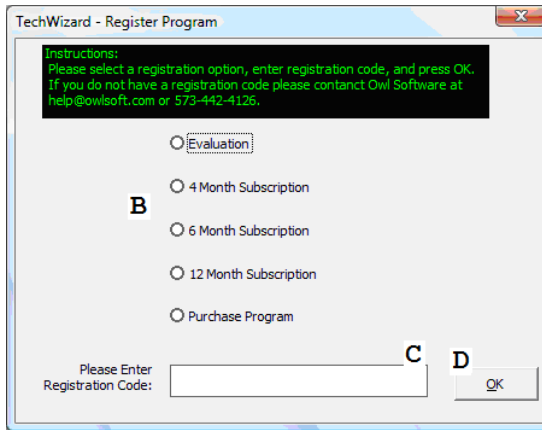
A. Starting TechWizard™ with Excel Security Settings Configured for Trusted Location

To use TechWizard™ you must make sure the Excel security settings are properly set (see *Security Settings* on page 1 if you have not already done so).

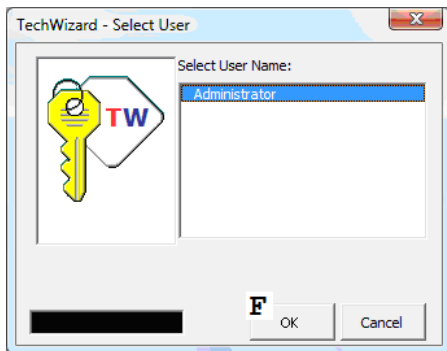
1. Find the TechWizard™ shortcut and click it to start TechWizard™. The shortcut either be on your desktop or under **Programs** when the **Start** button is clicked.
2. The TechWizard™ Front Panel will appear (see figure below). Press the **Register** button (A).
3. The Register Program window appears (see figure below). Select the **registration option** (B), enter the **registration code** in the space provided (C) and press the **OK** button (D). If you do not have a registration code, please contact Owl Software (call 573-442-4126 9 AM – 5 PM Central time on regular business days or e-mail help@owlsoft.com).



will



4. If you successfully registered TechWizard™, press the **Enter Program** button (E in figure above) to enter TechWizard™. When the **Select User** window appears, click the **OK** button (F in figure below). This will put you in the Formula Development section of TechWizard™.

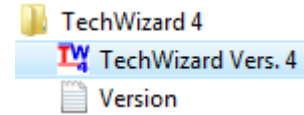


5. Contact Owl Software (call 573-442-4126 9 AM – 5 PM Central time on regular business days or e-mail help@owlsoft.com) if you have any questions.

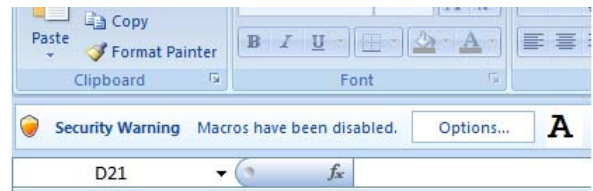
B. Starting TechWizard™ with Excel Security Settings Configured to Enable Macros

To use TechWizard™ you must make sure the Excel security settings are properly set (see *Security Settings* if you have not already done so).

- 1. Find the TechWizard™ shortcut and click it to start TechWizard™. The shortcut will either be on your desktop or under **Programs** when the **Start** button is clicked.



- 2. The TechWizard™ start up window appears in Excel along with a security warning. Click on the **Options** button (A in figure below right).



The Microsoft Security Options window appears.

- 3. Select the **Enable this content** option (B in figure below left) and Click **OK** (C).



- 4. For the rest of the instructions please refer to step 2 in *Starting TechWizard™ with Excel Security Settings Configured for Trusted Location* on the previous page.