



## Getting TechWizard™ Version 4 Started Using Excel 2007

This document covers installing, registering, and starting TechWizard™ in Excel 2007. If your computer has Microsoft® Excel 2000 to 2003, please refer to *Getting Started Using Excel 2000 - 2003*. Please note that TechWizard™ is registered **after** installing the program. You must contact Owl Software to receive a registration code.

### System Requirements:

A computer running Microsoft® Windows and Microsoft® Excel 2000 or higher is required.

### Installing TechWizard™

*Note: If the program is already installed from an internet download you can go to the next section, Security Settings.*

1. You must agree to the End User License Agreement to install TechWizard™.
2. Installing TechWizard™.
  - a. If you have downloaded TechWizard™ install file, please follow the instructions provided on the web page to install it.
  - b. If you are installing from a CD, please find the Setup.exe file on the CD and double-click it to start the installation. Follow the instructions provided in the install window.

**Notice: When installing TechWizard™ make sure you do not install the program under the \Program Files\ folder.**


The *Security Settings* section describes how to set up Excel to allow TechWizard™ Version 4 to load all necessary files. The *Starting TechWizard™ Version 4* section explains how to start TechWizard™ after the security settings have been configured.

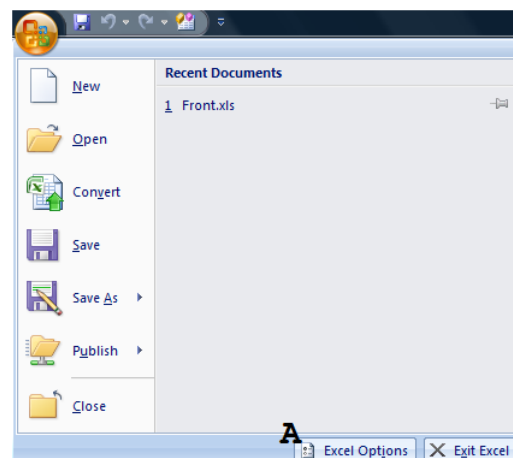
### Security Settings

For TechWizard™ to have access to its programming code, Excel macro security must allow the user to enable macros or the user must set the TechWizard™ subdirectory as a trusted location. This document discusses both methods. To add TechWizard™ to Excel Trusted Locations go to Section A (below) or to allow the user to enable macros in Excel go to Section B on page 3.

#### Section A: Security Settings – Adding TechWizard™ to Trusted Locations

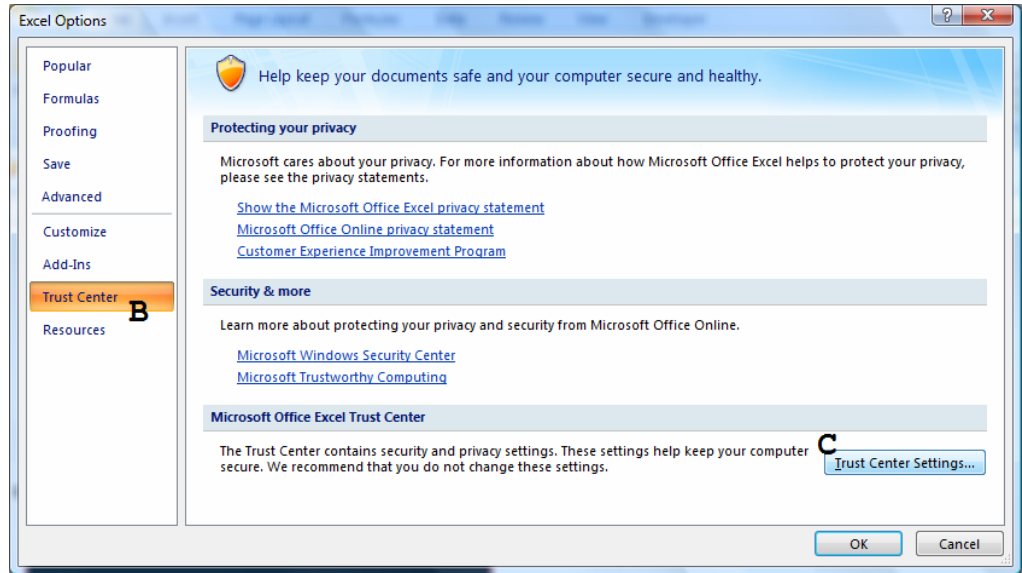
To add the TechWizard™ folder to Trusted Locations in Excel do the following:

1. Start Excel 2007. **TechWizard™ should not be open.**
2. Click the **Microsoft Office Button** , and then click the **Excel Options** button (A).



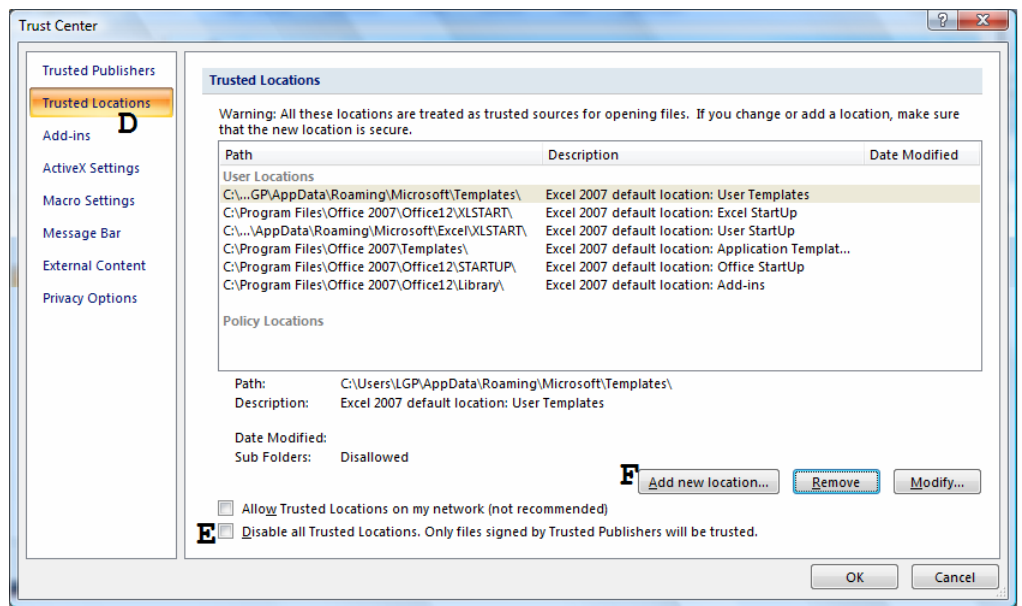
The Excel Options Window appears.

3. Click **Trust Center** on the left (B) then press the **Trust Center Settings** button (C).



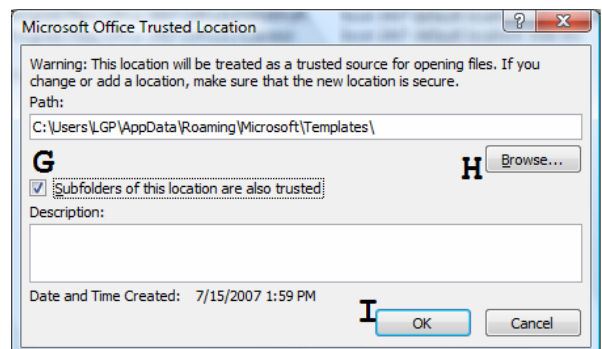
The Trust Center window appears.

4. Click **Trusted Locations** on the left (D). Make sure **Disable all Trusted Locations** is not checked (E). Press the **Add new location** button (F).



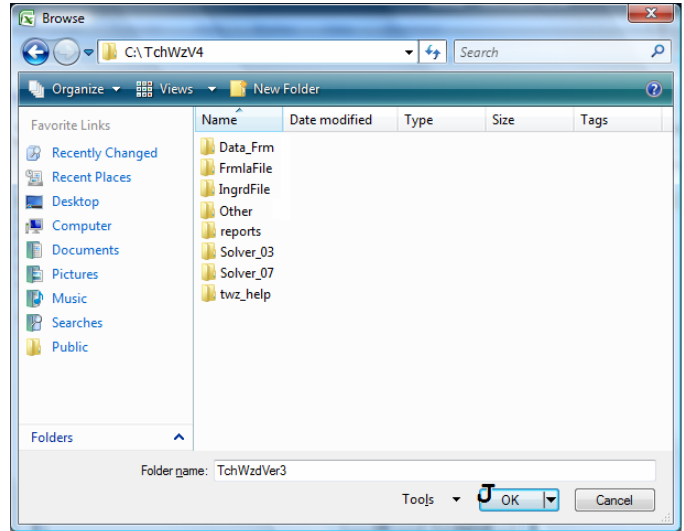
The Microsoft Office Trusted Location window appears.

5. Make sure **Subfolders of this location are also trusted** is checked (G). Click the **Browse** button (H). The Browse window appears. Locate the folder \TchWzV4\ (most likely it will be at C:\TchWzV4). Press the **OK** button in the **Browse** window (J in figure below). Press the **OK** button in the Microsoft Office Trusted Location window (I).



6. Click the **OK** button as needed to close the various windows.

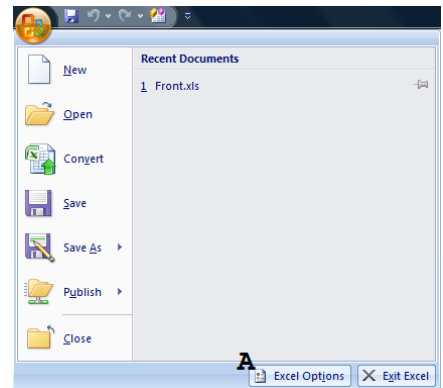
7. Exit Excel 2007.
8. You are ready to start TechWizard™. Please refer to *Starting TechWizard™ with Excel Security Settings Configured for a Trusted Location* on page 5.



**Section B: Security Settings – Allowing the User to Enable Macros**

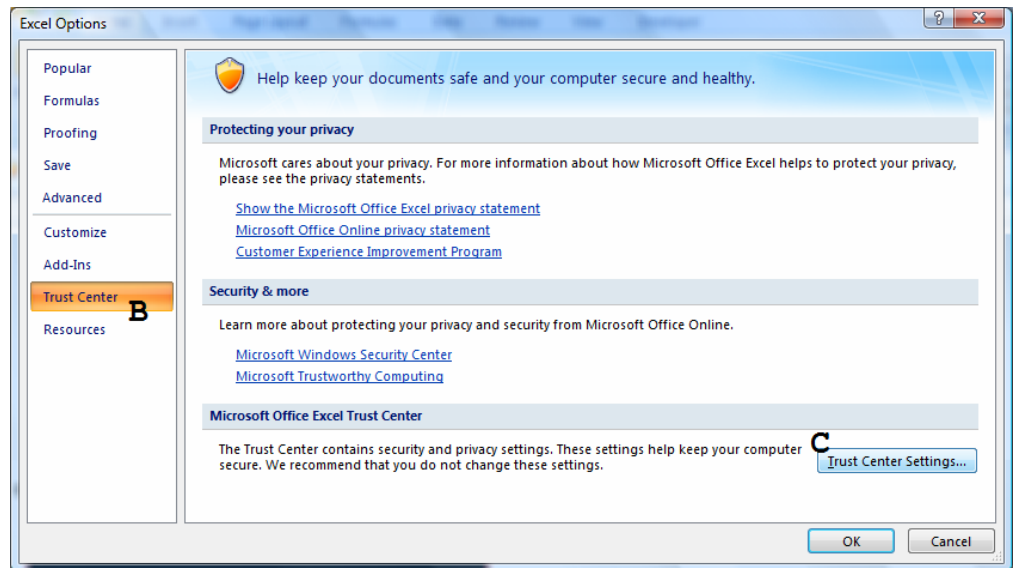
If you just completed the instructions in, *Section A: Security Settings – Adding TechWizard™ to Trusted Locations* then you can skip this section. To set Excel security settings to allow the user to enable macros when starting TechWizard™ do the following:

1. Start Excel 2007. **TechWizard™ should not be open.**
2. Click the **Microsoft Office Button** , and then click the **Excel Options** button (A).

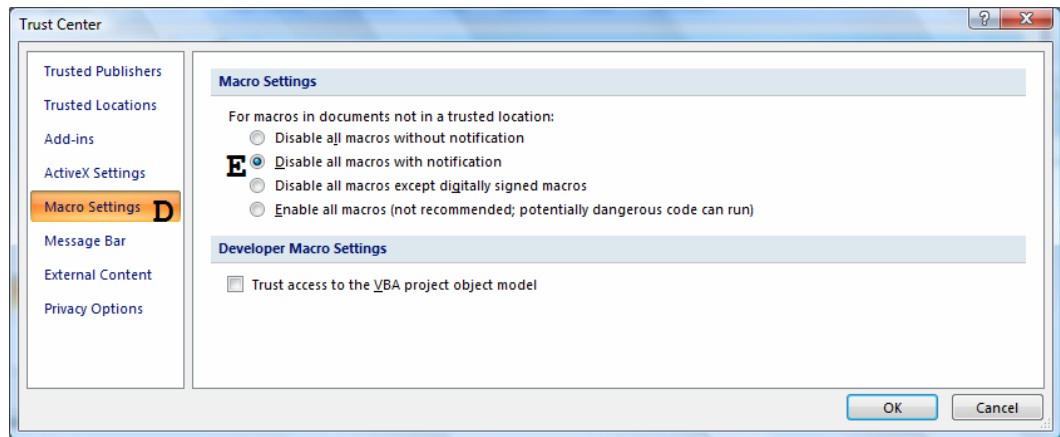


The Excel Options Window appears.

3. Click **Trust Center** on the left (B) then press the **Trust Center Settings** button (C).



The Trust Center window appears.



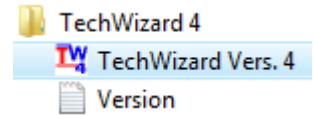
4. Click **Macro Settings** on the left (**D**).
5. Select the option **Disable all macros with notification** (**E**).
6. Press the **OK** button as needed to close the various windows.
7. Exit Excel 2007.
8. You are ready to start TechWizard™. Please refer to *Starting TechWizard™ with Excel Security Settings Configured to Enable Macros* on page 6.

## Starting TechWizard™ Version 4

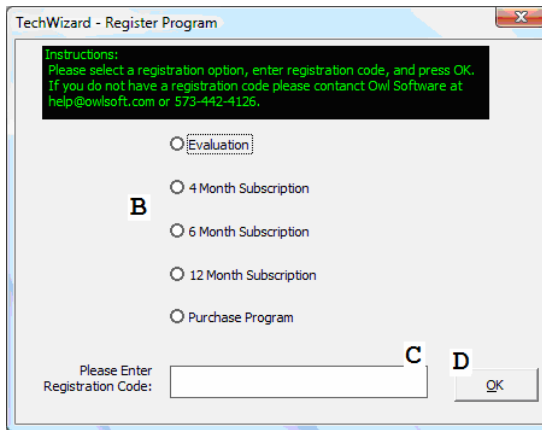
### A. Starting TechWizard™ with Excel Security Settings Configured for Trusted Location

To use TechWizard™ you must make sure the Excel security settings are properly set (see *Security Settings* on page 1 if you have not already done so).

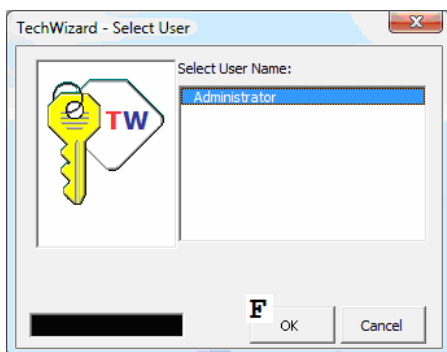
1. Find the TechWizard™ shortcut and click it to start TechWizard™. The shortcut either be on your desktop or under **Programs** when the **Start** button is clicked.
2. The TechWizard™ Front Panel will appear (see figure below). Press the **Register** button (A).
3. The Register Program window appears (see figure below). Select the **registration option** (B), enter the **registration code** in the space provided (C) and press the **OK** button (D). If you do not have a registration code, please contact Owl Software (call 573-442-4126 9 AM – 5 PM Central time on regular business days or e-mail help@owlsoft.com).



will



4. If you successfully registered TechWizard™, press the **Enter Program** button (E in figure above) to enter TechWizard™. When the **Select User** window appears, click the **OK** button (F in figure below). This will put you in the Formula Development section of TechWizard™.

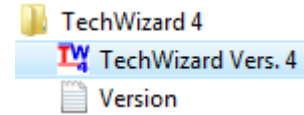


5. Contact Owl Software (call 573-442-4126 9 AM – 5 PM Central time on regular business days or e-mail help@owlsoft.com) if you have any questions.

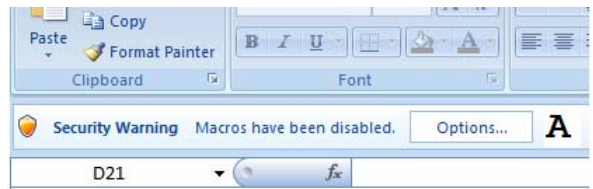
**B. Starting TechWizard™ with Excel Security Settings Configured to Enable Macros**

To use TechWizard™ you must make sure the Excel security settings are properly set (see *Security Settings* if you have not already done so).

- 1. Find the TechWizard™ shortcut and click it to start TechWizard™. The shortcut will either be on your desktop or under **Programs** when the **Start** button is clicked.



- 2. The TechWizard™ start up window appears in Excel along with a security warning. Click on the **Options** button (A in figure below right).



The Microsoft Security Options window appears.

- 3. Select the **Enable this content** option (B in figure below left) and Click **OK** (C).



- 4. For the rest of the instructions please refer to step 2 in *Starting TechWizard™ with Excel Security Settings Configured for Trusted Location* on the previous page.