

Creating a Graphics File for a Nutrition Facts

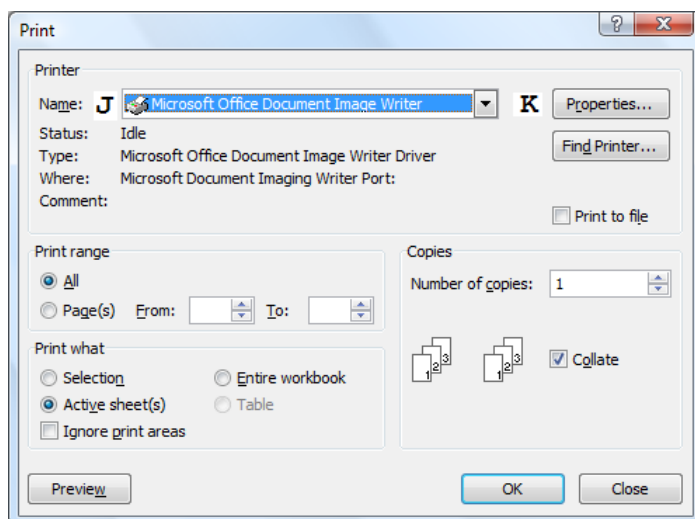
There are a variety of ways to create a graphics file for a Nutrition Facts. The user can print the Nutrition Facts as described in the previous section then scan the camera ready document using a scanner. The user can print a pdf document of a Nutrition Facts then import it into Adobe® Illustrator®. The user can copy the Nutrition Facts and paste it as a picture in a variety of Microsoft® Windows programs.

The following describes how to output a Nutrition Facts to a TIFF graphics file using the Microsoft® Office Document Image Writer. If you require an inexpensive PDF or Graphic print driver we recommend the Universal Document Converter (learn more at <http://www.print-driver.com>).

Creating a TIFF Graphics File for a Standard Label

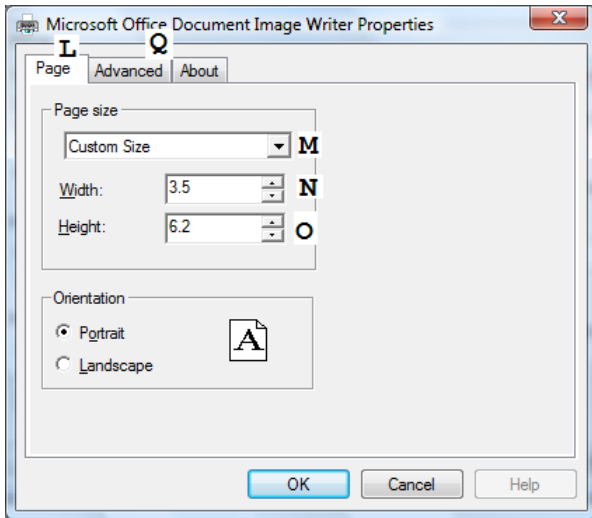
Creating a graphics file for a label is fairly straightforward. The user outputs the label to an Excel file configuring the file for output to a graphic file, opens the label Excel file, and sets up the document and printer settings to use the Microsoft® Office Document Image Writer, and saves the TIFF file. The following instructions provide details on how to do this.

1. The label should be output to an Microsoft® Excel file. The key steps for saving a Nutrition Facts to an Excel File are:
 - a. Create the Nutrition Facts and when viewing the label press the **Print Label** button.
 - b. The Nutrition Label Report window appears. Select the **Nutrition Label** Option.
 - c. Click the **Save to Excel File** button.
 - d. When prompted to configure the file to output to a graphics file answer yes. Provide a name for the file and save.
 - e. The user is prompted with instructions on how to set up printer settings.
2. Open the file in Excel, not in TechWizard™. The file is typically stored in the \TchWzV4\reports folder.
3. Select printer and enter printer settings.
(Excel 2000 – 2003) Select the **File** menu and click **Print**.
(Excel 2007 or higher) Click the round **Office** button, select **Print**, and click **Print**.
4. The Print window appears (**see figure below**).
5. Select Microsoft® Office Document Image Writer in the dropdown (**J**).

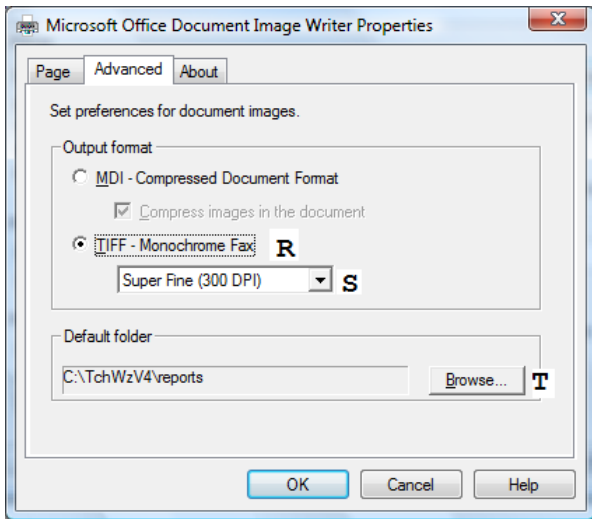


6. Press the **Properties** button (**K**). The Properties window appears (**see figure below**).

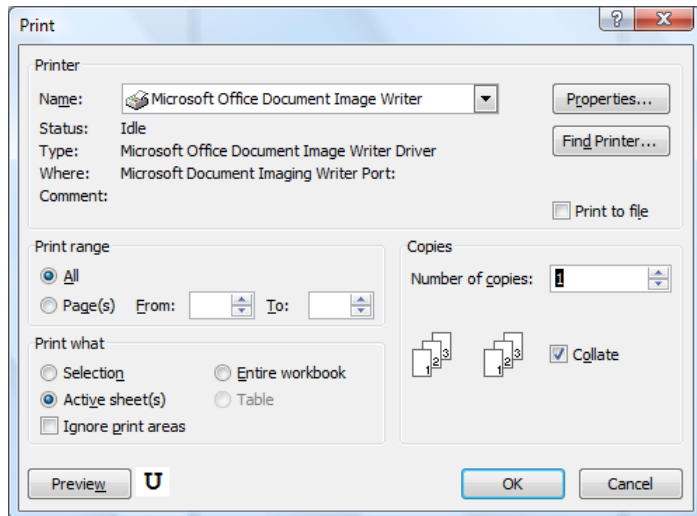
- 7. Set page size to Custom Size (M), set width to 7 (N) and height to 13 (O in figure below). Note if you have included more nutrients than the standard you will need to make the page height larger.



- 8. Click the Advanced tab (Q in figure above).
- 9. In the Advance portion, select the TIFF – Monochrome Fax (R in figure below) option and resolution to Super Fine (300 DPI) (S in figure below).
- 10. Click the Browse button (T) to set folder where the TIFF file will be saved. Click OK.



- 11. Click the Print Preview button (U in figure below) to view the output. Further adjust the page size as needed. When you print the document you will be prompted to provide a file name. You can also save the modified Excel file.



Creating a TIFF Graphics File for a Standard Label (No Footnote)

1. Follow the steps in the section, *Creating a TIFF Graphics File for a Standard Label* with the following changes.
2. In step 7 set page set width to 7 and height to 10.4.

Creating a TIFF Graphics File for a Simplified Label (No Footnote)

3. Follow the steps in the section, *Creating a TIFF Graphics File for a Standard Label* with the following changes.
4. In step 7 set page set width to 7 and height to 8.

Creating a TIFF Graphics File for a Standard Label (Right Footnote)

1. Follow the steps in the section, *Creating a TIFF Graphics File for a Standard Label* with the following changes.
2. In step 9, instead of column K select column O.
3. In step 7 set page width to 12.4 and height to 10.6.

Creating a TIFF Graphics File for a Tabular Label

1. Follow the steps in the section, *Creating a TIFF Graphics File for a Standard Label* with the following changes.
2. In step 7 set page width to 25.2 and height to 4.4.

Creating a TIFF Graphics File for a Tabular Label (No Footnote)

1. Follow the steps in the section, *Creating a TIFF Graphics File for a Standard Label* with the following changes.
2. In step 7 set page width to 20 and height to 4.4.

Creating a TIFF Graphics File for a Linear Label

1. Follow the steps in the section, *Creating a TIFF Graphics File for a Standard Label* with the following changes.
2. In step 7 set page set width to 12.4 and height to 4. What you see in Excel may not match the graphic output. Resize column C and row 2 as needed and Print Preview until you get the desired appearance.