



Production Wizard™

CREATING A USER ACCOUNT

Frank is the Production Wizard™ program administrator for R.H. Ice Cream Company. We will watch him do the following:



- Create a new user account to allow a user to create batch reports.
- Test the new user account

Create a New User Account

Frank's company uses Production Wizard™ for day-to-day batch operations. Today Frank is creating a new user account using the Production Wizard™ Administrator feature. This is a security feature that determines a user's level of access in Production Wizard™.

Before we watch Frank set up the new user account, let's briefly review what Production Wizard™ does. Production Wizard™ controls the main operations involved in day-to-day batch operations starting with the arrival of raw ingredients, keeping track of the composition of these raw ingredients, creating batch reports based on the current composition of each ingredient, and finally sending batch report information to inventory and process control software.

Frank is adding a new user account for Ed who works on the plant floor making product. Ed's responsibilities include monitoring raw ingredient tanks, creating batch reports, and using these batch reports to make mix. When cream or milk is delivered, Ed retrieves a sample for lab analysis and updates the arrival time and amount in Production Wizard™. The lab is responsible for updating the composition of the tank ingredient in Production Wizard™. Ed in turn uses this information when creating a batch report for whatever he is making.

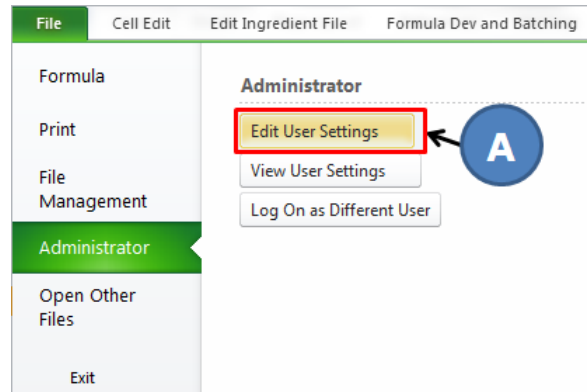
Based on Ed's needs, Frank is setting up a user account to allow Ed to do the following:

- Access the Tank Status Editor
- Access the Batch Creation Tool

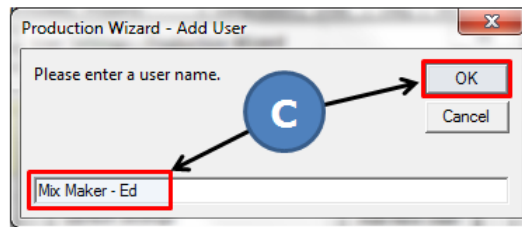
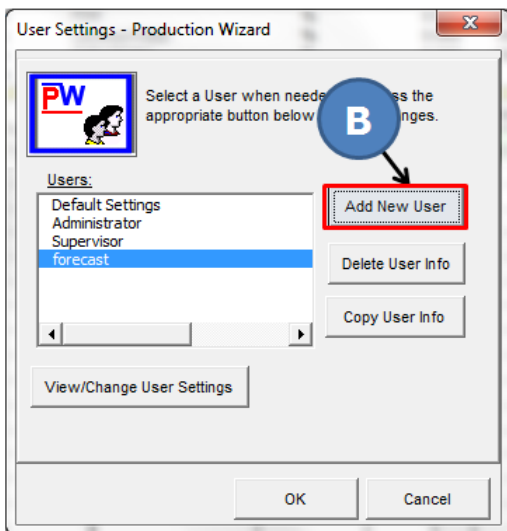


Ed will not have access to any other Production Wizard™ features. For example, Ed will not be able to change formula or ingredient configurations and he will not be able to update the composition of tank ingredients. Frank is already logged on to his Production Wizard™ account as the program administrator.

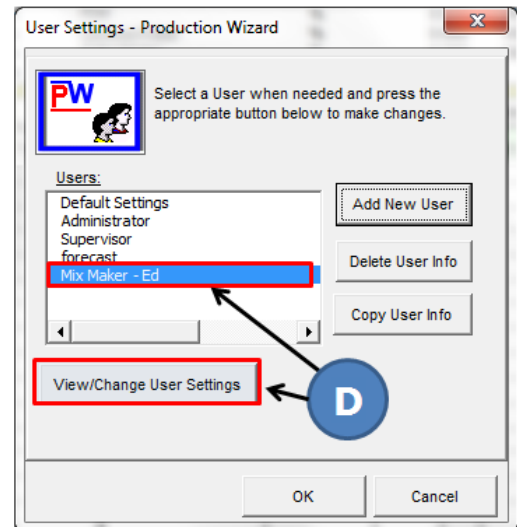
To start creating the new user account he clicks on the **Edit User Settings** feature (A).



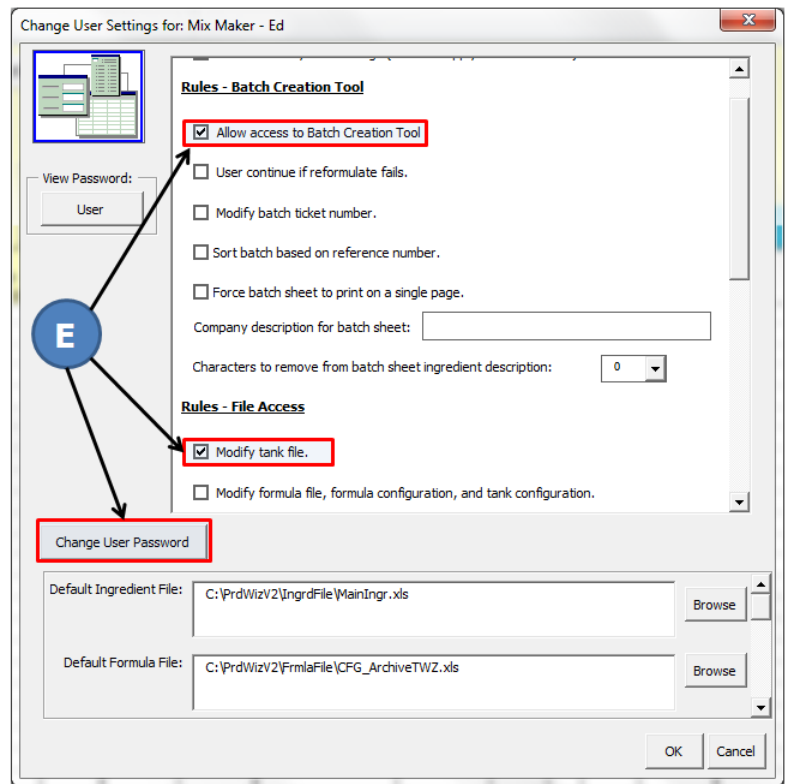
The User Settings window appears. He clicks the **Add New User** button (B) and enters the new user account name when prompted and clicks the **OK** button (C).



Frank selects his new user account name (**Mix Maker – Ed**) and clicks the **View/Change User Settings** button. This will allow Frank to set the Production Wizard™ features to which Ed has access.

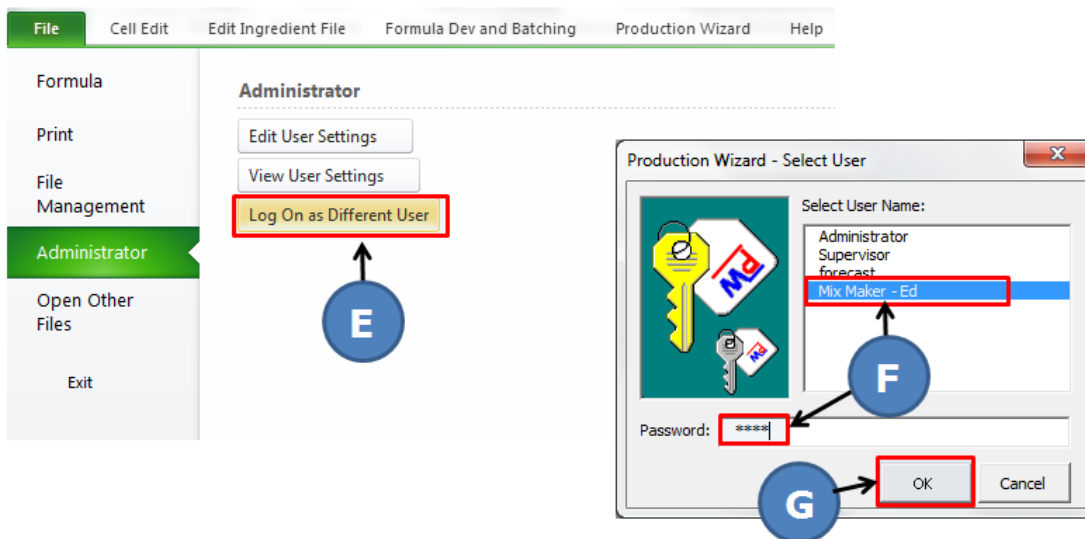


The Change User Settings window appears. Frank clicks the **Change User Password** button (E) to enter the password Ed will use when he logs on Production Wizard™. He scrolls through the list on the right portion of the screen checking or unchecking the features Ed is allowed to use. Notice that **Allow access to Batch Creation Tool** and **Modify tank file** are checked (E).

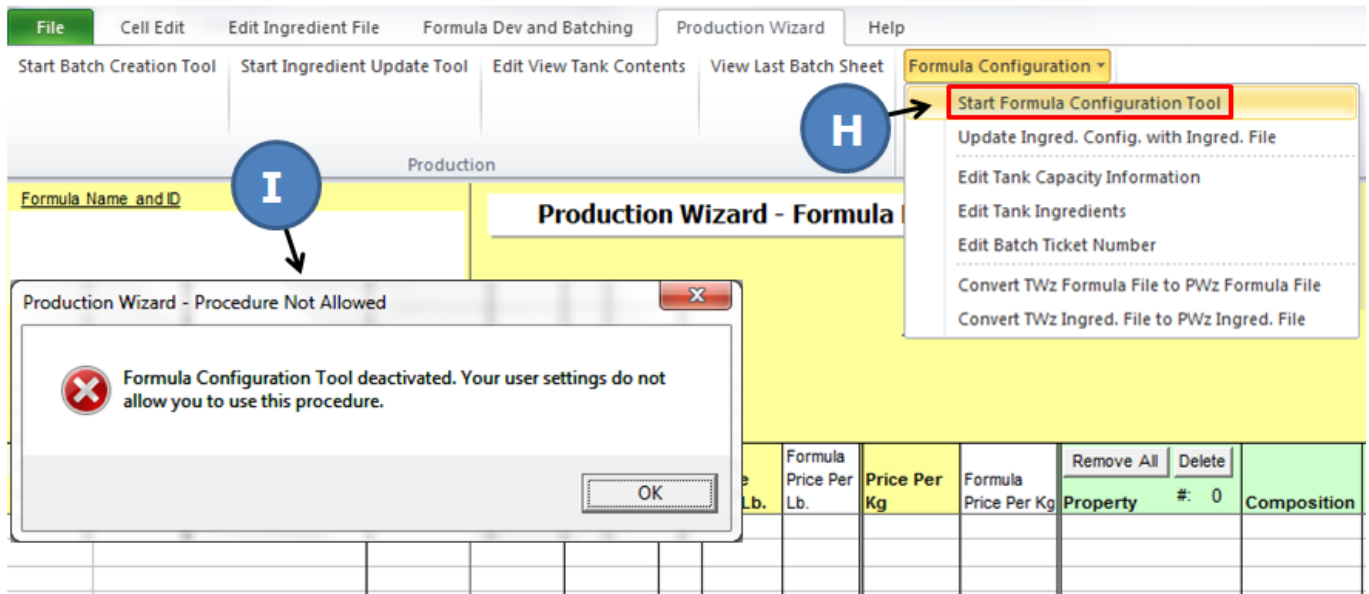


Test New User Account

Frank will now test the new user account to insure that he has configured it properly. He clicks the **Log On as Different User** option (E). In the window that appears he selects Ed's user account, enters Ed's password (F), and clicks the **OK** button.



Frank is now logged on using Ed's user account. Only those features that Ed is allowed to use should be available. Frank tries accessing something that Ed does not have access to. He clicks on the **Start Formula Configuration Tool** (H). This feature is used by program administrators to set up formulas for use with the Batch Creation Tool. Frank gets the message he is expecting telling him that access to this feature is denied (I).



We will leave Frank now while he continues to check the user account.

Contact Us

We hope you found this example informative. It only takes Frank a few minutes to set up a new user account. This feature provides for controlled access to the many components in Production Wizard™ and allows users to do their required tasks without the risk of making unwanted changes to formulas, ingredients, or settings.



Production Wizard™ keeps formulas on track and makes day-to-day batching much more efficient. It is designed to work with existing applications and to start saving you money immediately. With Production Wizard™, we can quickly create a data bridge to share valuable information with other software programs and databases. Please contact us today to learn more about Production Wizard™ or to schedule a live demonstration.