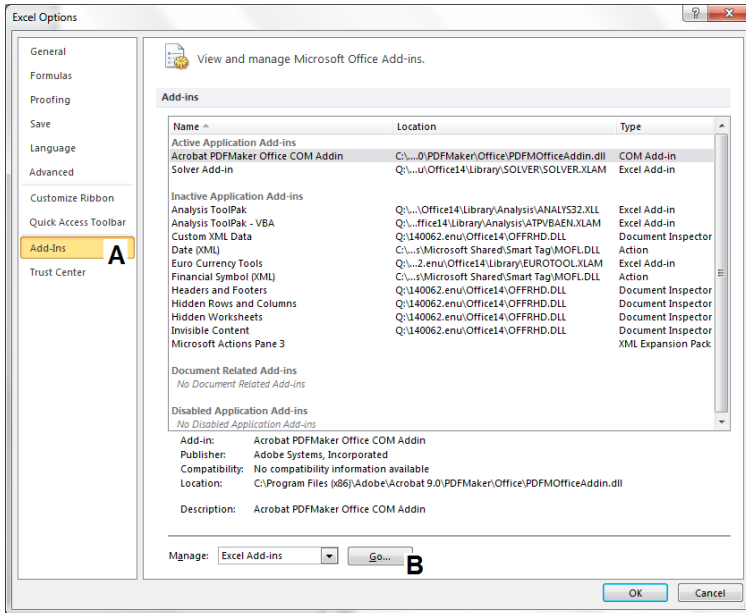


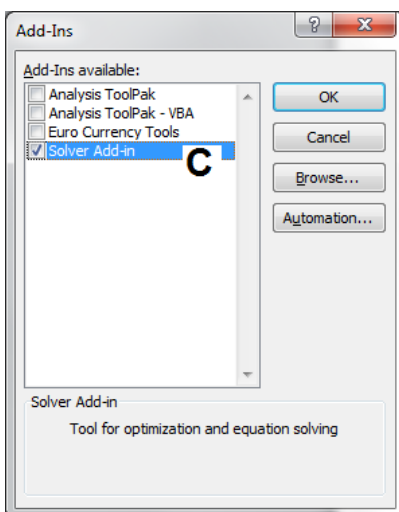
Microsoft Excel 2010 - Registering the Solver Add-In

In some instances it is necessary for the user to register the Solver Add-In in Microsoft® Excel 2010 for Owl Software programs to function properly. The following describes how to accomplish this.

1. Make sure that neither TechWizard™ nor Production Wizard™ is running. Start Microsoft® Excel 2010.
2. Click the **File** tab and select **Options**.
3. The Excel Options window appears. Select **Add-Ins** on the left side of the window (**A** in figure below).
4. The View and Manage Microsoft Office Add-ins window appears. At the bottom of the screen make sure Excel Add-ins is showing in the drop down and click the **Go** button (**B** in figure below).



5. The Add-Ins Available window appears. Make sure there is a check mark next to **Solver Add-in** (**C** in figure below) and click **OK** until all windows are closed. Exit Excel.



6. You are now ready to start TechWizard™ and/or Production Wizard™.