

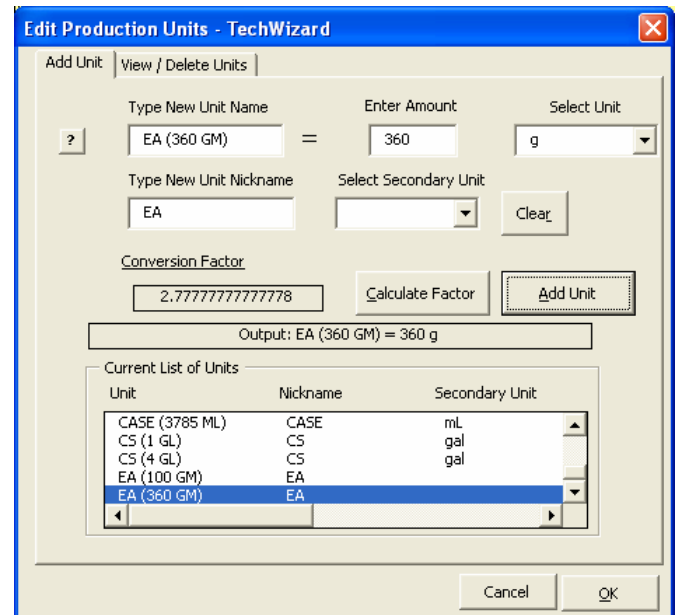
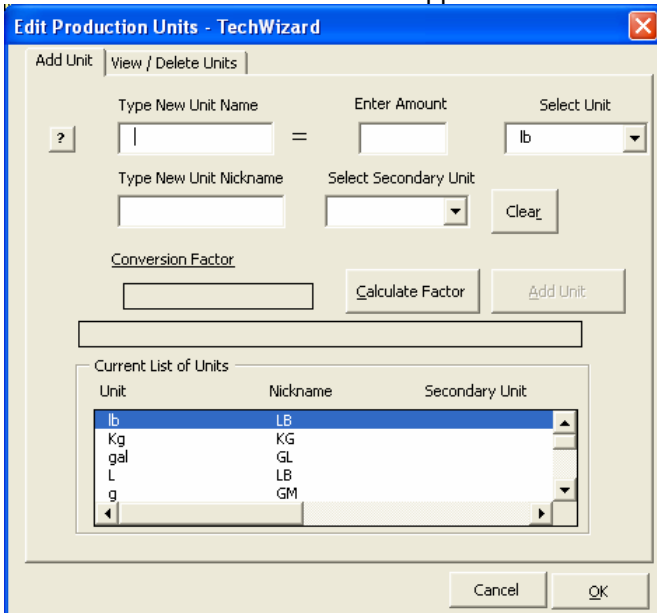
## Creating a New Production Unit in Production Wizard™

This feature allows the user to create a new unit to appear on the batch sheet. The unit may have a secondary unit. For example (bags lbs), the secondary unit is pounds. A unit can have a nickname that would appear in its place. For example bag (50 lbs) could have the nickname bag.

Select **Edit/Create Production Units** from the **Batching** Menu.



The Edit Production Units window appears.



When asked to save changes. Press **Yes**.

To make a new unit called EA (360 GM) do the following:

In the **Type New Unit Name** box enter: EA (360 GM)

In the **Enter Amount** box enter: 360

With the **Select unit** dropdown select: g

In the **Type New Unit Nickname** box enter: EA

In the **Select Secondary Unit** dropdown, do not select anything if you do not want a second unit on the batch sheet (e.g. Bags, lbs).

Press the **Calculate Factor** button.

Press the **Add Unit** button.

Press the **OK** button when finished.