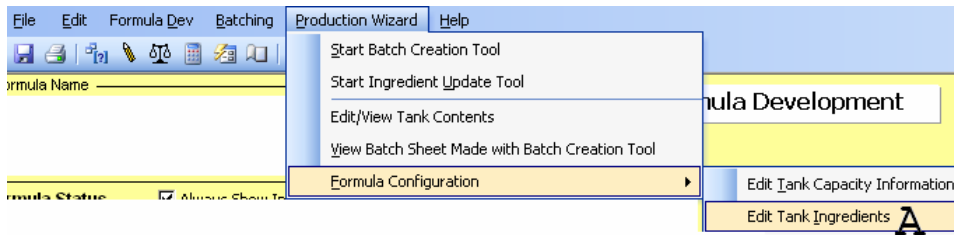


Using the Tank Ingredient Editor

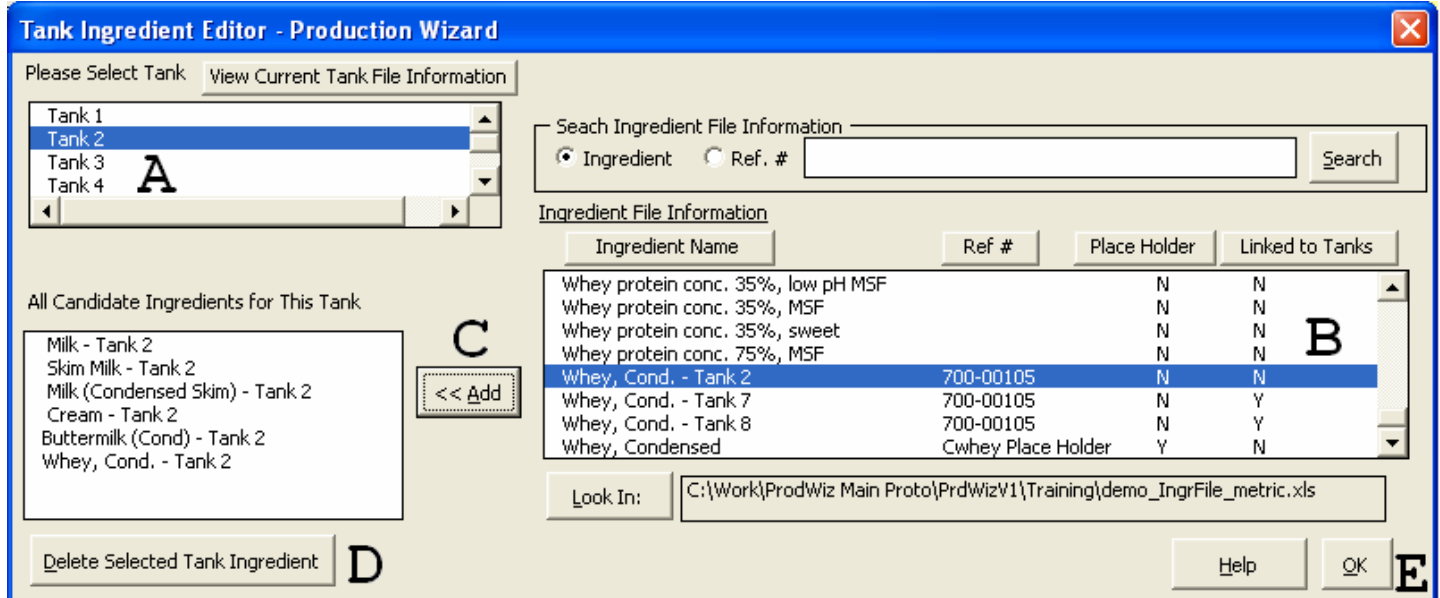
This feature allows the user to add a candidate ingredient to a particular tank.

1. Add the new tank candidate ingredient to the ingredient file. When adding the new ingredient, do not attempt to link this new ingredient to a tank.
2. In the Formula Development section, select the **Production Wizard** menu. Select **Edit Tank Ingredients (A)** from the **Formula Configuration** menu.



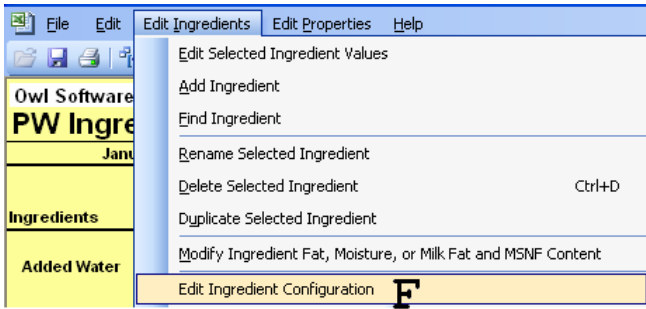
The **Tank Ingredient Editor** window appears.

3. Add the candidate ingredient to the Tank. Select the tank to modify (**A**). Select the candidate ingredient to add to the tank (**B**) and press the **Add** button (**C**). If you need to delete a candidate ingredient from the tank, press the **Delete Selected Tank Ingredient** button (**D**).



4. Press the **OK** button (**E**) when finished. When asked, answer **Yes** to save changes.

5. Open the ingredient file and link the ingredient in the ingredient file to the tank candidate ingredient. In the ingredient file, select **Edit Ingredient Configuration (F)** from the **Edit Ingredients** menu.



6. The **Ingredient Configuration** window appears. Select the new tank candidate ingredient. Set **Ingredient linked to Tank** to **Y (G)**. Make sure the tank ingredient has a “Place Holder” ingredient (**H**). Save changes made to the ingredient file. The new tank ingredient is ready to use.

