

# Getting Production Wizard™ Started Using Excel

This document covers installing, registering, and starting Production Wizard™ in Excel 2010 - 2019. Please note that Production Wizard™ is registered **after** installing the program. You must contact Owl Software to receive a registration code.

## System Requirement

A computer running Microsoft® Windows and Microsoft® Excel 2003 or higher is required.

## Installing Production Wizard™

*Note: If the program is already installed please go to the next section, Security Settings.*

Please follow the instructions provided on the web page to install Production Wizard™.

**Notice: When installing Production Wizard™ make sure you do not install the program under the Program Files folder.**

The *Security Settings* section describes how to set up Excel to allow Production Wizard™ to load all necessary files. The *Starting Production Wizard™* section explains how to start Production Wizard™ after the security settings have been configured.

## Security Settings

For Production Wizard™ to have access to its programming code, Excel macro security must allow the user to enable macros or the user must set the Production Wizard™ subdirectory as a trusted location. This document discusses both methods. To add Production Wizard™ to Excel Trusted Locations go to Section A (below) or to allow the user to enable macros in Excel go to Section B on page 2.

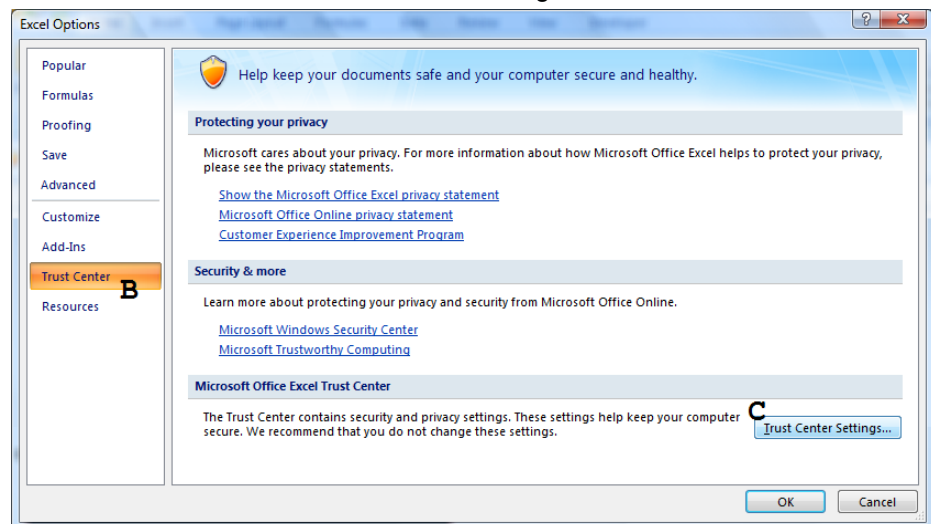
### Section A: Security Settings – Adding Production Wizard™ to Trusted Locations

To add the Production Wizard™ folder to Trusted Locations in Excel do the following:

1. Start Excel. **Production Wizard™ should not be open.**
2. Click the **File** tab and then click the **Options**.

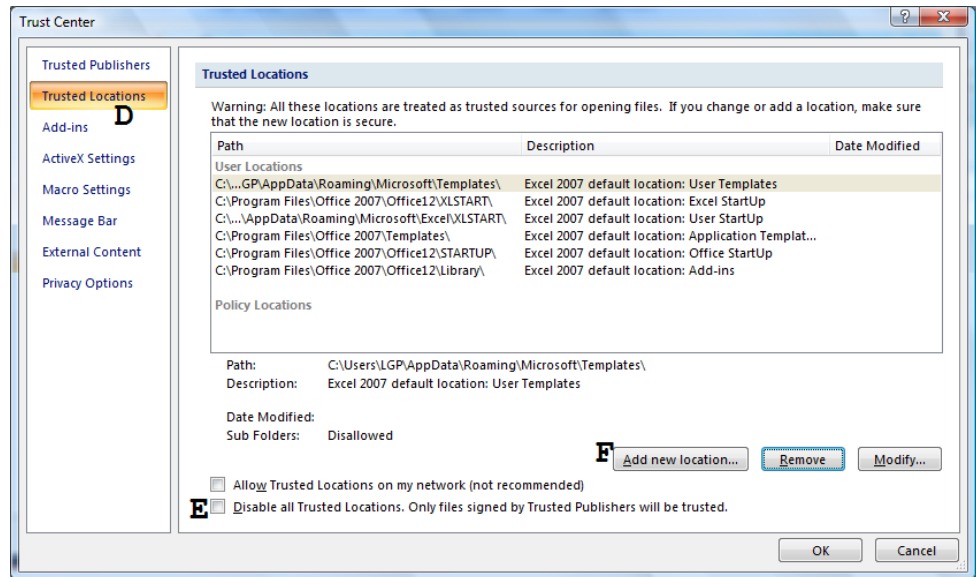
The Excel Options Window appears.

3. Click **Trust Center** on the left (B) then press the **Trust Center Settings** button (C).



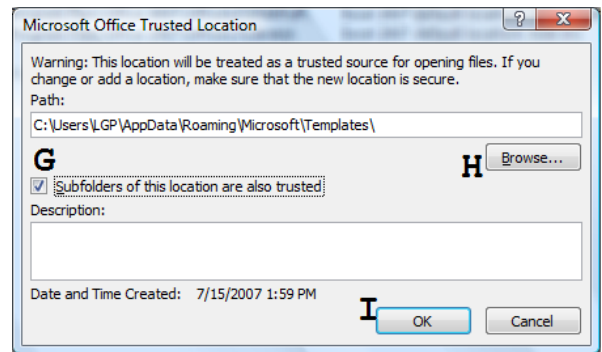
The Trust Center window appears.

- Click **Trusted Locations** on the left (D). Make sure **Disable all Trusted Locations** is not checked (E). Press the **Add new location** button (F).



The Microsoft Office Trusted Location window appears.

- Make sure **Subfolders of this location are also trusted** is checked (G). Click the **Browse** button (H). The Browse window appears. Locate the folder \PrdWizV2. Press the **OK** button in the **Browse** window (J in figure below). Press the **OK** button in the Microsoft Office Trusted Location window (I).



- Click the **OK** button as needed to close the various windows.
- Exit Excel.

- You are ready to start Production Wizard™. Please refer to *Starting Production Wizard™ with Excel Security Settings Configured for a Trusted Location* on page 3.

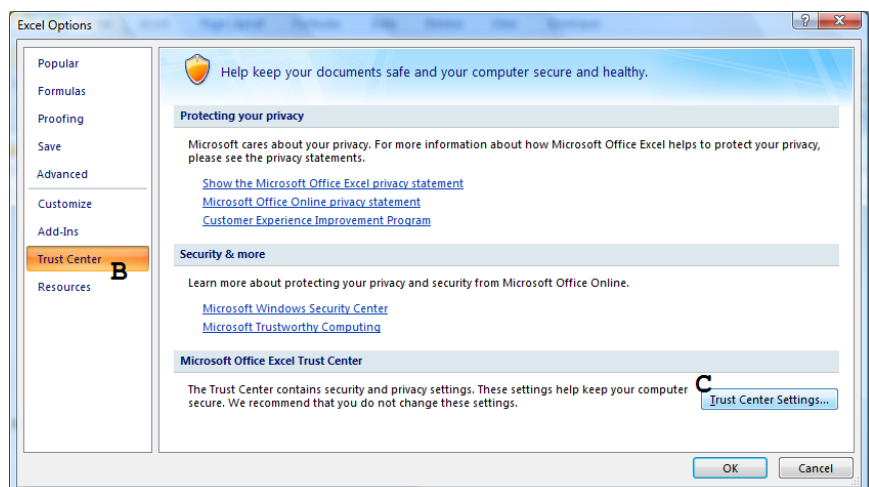
## Section B: Security Settings – Allowing the User to Enable Macros

If you just completed the instructions in, *Section A: Security Settings – Adding Production Wizard™ to Trusted Locations* then you can skip this section. To set Excel security settings to allow the user to enable macros when starting Production Wizard™ do the following:

- Start Excel. **Production Wizard™ should not be open.**
- Click the **File** tab and then click **Options**.

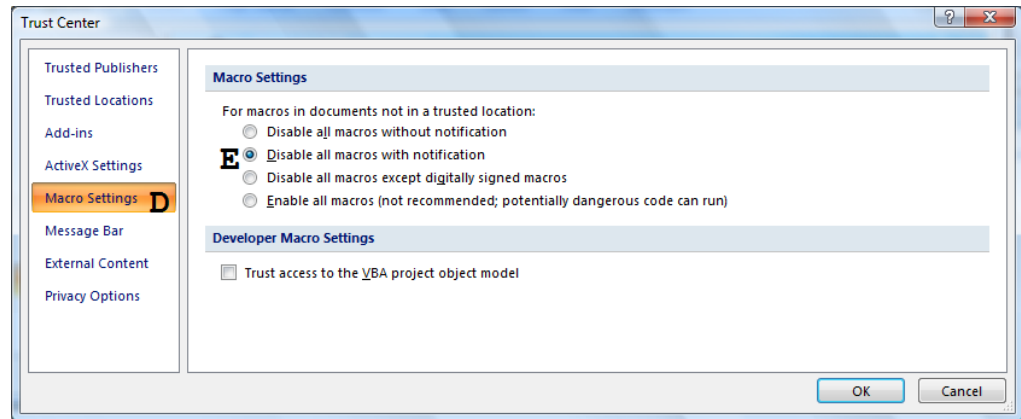
The Excel Options Window appears.

- Click **Trust Center** on the left (B) then press the **Trust Center Settings** button (C).



The Trust Center window appears.

4. Click **Macro Settings** on the left (**D**).
5. Select the option **Disable all macros with notification (E)**.
6. Press the **OK** button as needed to close the various windows.



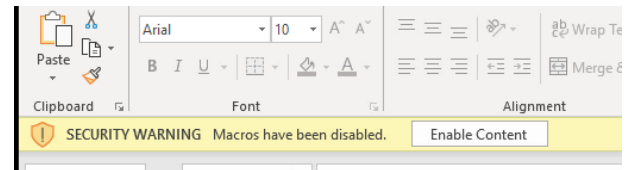
7. Exit Excel.  
You are ready to start Production Wizard™

## Starting Production Wizard™

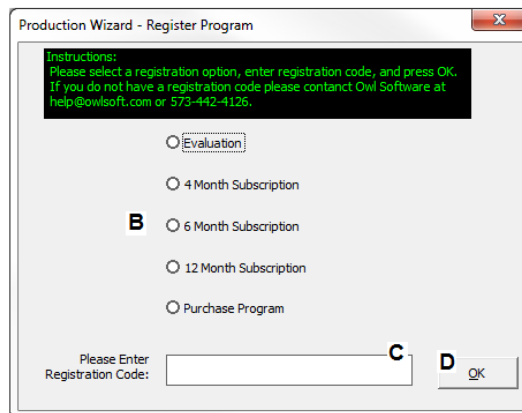
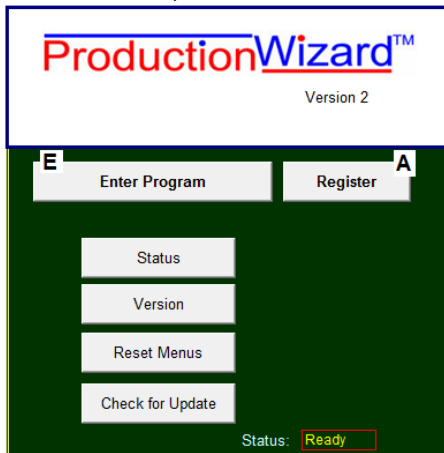
### Starting Production Wizard™

To use Production Wizard™ you must make sure the Excel security settings are properly set (see *Security Settings* on page 1 if you have not already done so).

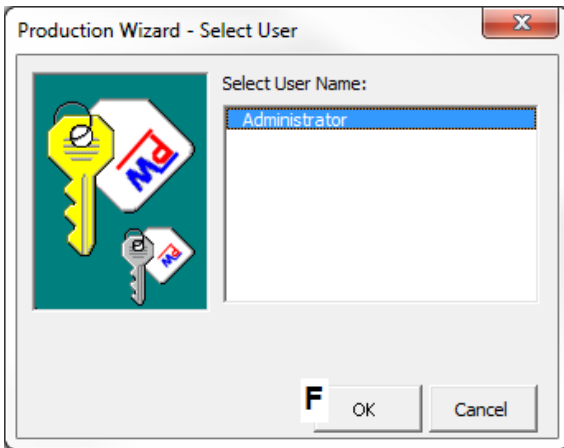
1. Find the Production Wizard™ shortcut and click it to start Production Wizard™. If this security warning appears. Click the **Enable Content** button.



2. The Production Wizard™ Front Panel will appear (see figure below). Press the **Register** button (**A**).
3. The Register Program window appears (see figure below). Select the **registration option (B)**, enter the **registration code** in the space provided (**C**) and press the **OK** button (**D**). If you do not have a registration code, please contact Owl Software (call 573-442-4126 9 AM – 5 PM Central time on regular business days or e-mail help@owlsoft.com).



4. If you successfully registered Production Wizard™, press the **Enter Program** button (**E** in figure above) to enter Production Wizard™. When the **Select User** window appears, click the **OK** button (**F** in figure below). This will put you in the Formula Development section of Production Wizard™.



Contact Owl Software (call 573-442-4126 9 AM – 5 PM Central time on regular business days or e-mail help@owlsoft.com) if you have any questions.